



CAMPAIGN  
FOR  
REAL ALE

# Celebrating the Real Ale Scene in Sussex

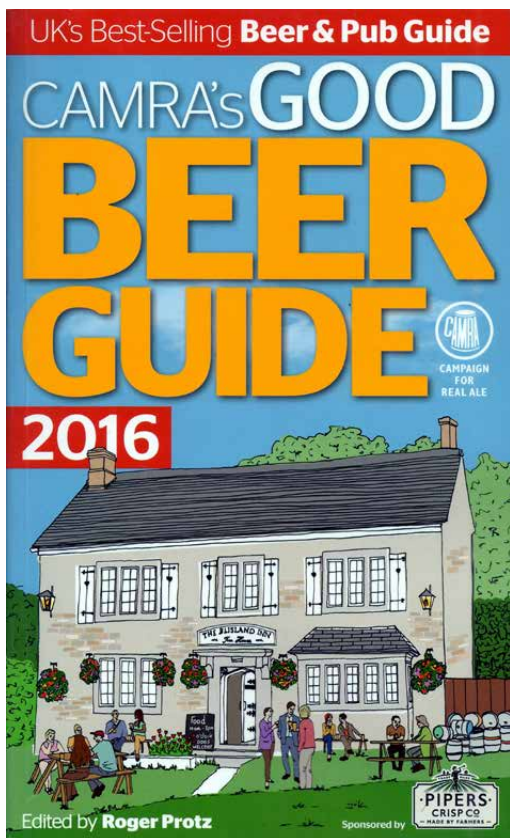
# Sussex Drinker

Winter 2015

Free



## 126 SUSSEX PUBS



PUBLISHED  
AND  
FINANCED  
BY THE  
SUSSEX  
BRANCHES  
OF THE  
CAMPAIGN  
FOR  
REAL ALE

**First-Timers Feature - p.24-25**



**BEDLAM  
BREWERY**

**MODERN  
BREWS**

**CENTURIES  
OF TRADITION**

**OUR FIELDS SUPPLY THE HOPS.  
SOLAR ENERGY FUELS THE BREWERY.  
LOCAL FARMERS BENEFIT FROM OUR FREE  
SPENT GRAIN.**

**THIS IS BEDLAM BREWERY.**

**AVAILABLE IN CASK,  
KEG AND BOTTLE**

**BEDLAM BREWERY**

Albourne Farm Estate, Shaves Wood Lane  
Albourne, West Sussex BN6 9DX

Tel: +44 1273 978015

Twitter: @BedlamBrewery

**BEDLAMBREWERY.CO.UK**



## Sussex Branches of CAMRA

### Surrey & Sussex Regional Director:

Chris Stringer, 01403 270505 (Horsham)

pennyandchris@btinternet.com

### Sussex Area Organiser:

Peter Page-Mitchell, 01424 422128

(St. Leonards-on-Sea)

ppagemitchell@hotmail.co.uk

**Beer Festival:** Brighton Corn Exchange, 17-19 March 2016

**POTY:** Tower, St Leonards-on-Sea

**COTY:** Albatross RAFA Club, Bexhill-On-Sea

### Western Sussex

Max Malkin, 01243 828394

ifitrainsitisanastyday@mypostoffice.co.uk

www.westernsussexcamra.org.uk

**Beer Festival:** Yapton, 13-15 May 2016

**POTY:** Inglenook, Nyetimber

### Arun & Adur

Nigel Watson, 07555 167804

aaacamracontact@gmail.com

www.aaa-camra.org.uk

**Beer Festival:** Worthing, Oct 2016

**POTY:** Parsonage Bar & Restaurant, Tarring

### North Sussex

Roy Bray, 07833 205901

r.bray755@btinternet.com

www.northsussexcamra.org.uk

**Beer Festival:** Equinox, 5-6 March 2016

**POTY:** White Horse, Maplehurst

### Brighton & South Downs

John Kirkland, 01293 519844

john.kirkland@btinternet.com

www.brightoncamra.org.uk

**Beer Festival:** South Downs, Lewes, June 2016

**POTY:** Brewers Arms, Lewes

### South East Sussex

Phil Cozens, 01323 460822

contact.camra.sesusx@gmail.com

North East Sussex Sub Branch

John Packer, 07841 669096

john\_packer@me.com

www.southeast-sussex-camra.com

**Beer Festival:** Eastbourne, 8-10 Oct 2016

**POTY:** Tower, St Leonards-on-Sea

**COTY:** Albatross RAFA Club, Bexhill-On-Sea



## Sussex Drinker: Winter 2015. No. 84

**Circulation 13,250**

Published by Sussex Branches of the Campaign for Real Ale

### Editor:

The Quaffer

Email: [sussexdrinker@yahoo.co.uk](mailto:sussexdrinker@yahoo.co.uk)

### Advertising:

Neil Richards MBE Email: [N.Richards@btinternet.com](mailto:N.Richards@btinternet.com)

[www.matelotmarketing.co.uk](http://www.matelotmarketing.co.uk)

Tel: 01536 358670 Mobile: 07710 281381

### Next Publication Date:

4 Feb. Copy by 21 Dec

### Copy Submissions:

The Editor invites submissions that

celebrate the real ale scene in Sussex.

Please keep to a maximum of 700 words.

Please use plain text or Word files.

Please send good quality pictures separately, preferably in JPG format.

### Standard Disclaimer:

Views expressed in this magazine are those of the individual authors and not necessarily supported by the editor or CAMRA.

All content © Sussex Branches of CAMRA

Your local Trading Standards Offices are:

### East Sussex:

St Mary's House, 52 St Leonards Road,

Eastbourne, East Sussex, BN21 3UU

Tel: 01323 418200 Fax: 01323 418227

Email: [consumer.advice@eastsussexcc.gov.uk](mailto:consumer.advice@eastsussexcc.gov.uk)

Website: [www.eastsussexcc.gov.uk](http://www.eastsussexcc.gov.uk)

### West Sussex:

Details of all complaints are passed to

West Sussex Trading Standards Service by CACS

Citizens Advice Consumer Service

Tel: 08454 040506

Website: [www.citizensadvice.org.uk/index/getadvice/consumer\\_service.htm](http://www.citizensadvice.org.uk/index/getadvice/consumer_service.htm)

### Brighton & Hove:

Bartholomew House, Bartholomew Square,

Brighton, East Sussex, BN1 1JP

Tel: 01273 292523; Fax: 01273 292524

Email: [trading\\_standards@brighton-hove.gov.uk](mailto:trading_standards@brighton-hove.gov.uk)

Website: [www.brighton-hove.gov.uk](http://www.brighton-hove.gov.uk)

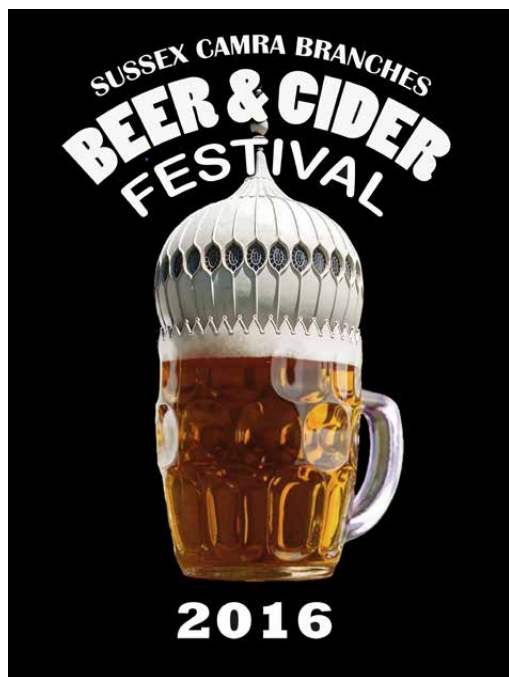
Campaign for Real Ale Ltd

230 Hatfield Road, St Albans, AL1 4LW

Tel: 01727 867201 Fax: 01727 867670

Website: [www.camra.org.uk](http://www.camra.org.uk)





The 26th Sussex CAMRA Branches Beer & Cider Festival will once again be held at the Corn Exchange, Brighton Dome, Church Street, Brighton, BN1 1UE, from Thursday 17 to Saturday 19 March 2016. The venue is fully wheelchair accessible.

There will be over 160 beers from across the UK, including new beer launches from some of our Sussex breweries, plus a large selection of ciders and perries. There will also be an excellent selection of British and foreign bottled beers to drink at the venue or take away.

A variety of food will also be on sale, including vegetarian and vegan options, provided by the Dome caterers.

This year, all the beer will be cooled throughout the festival. This means that it should be in the same excellent condition on the Saturday evening as it is when we open on Thursday.

## Sussex CAMRA Branches 26th Beer & Cider Festival

### Opening Times & Ticket Prices:

Thursday	5pm to 11pm	£9.00
Friday	11am to 3pm	£5.00
	5pm to 11pm	£9.00
Saturday	12noon to 8pm*	£8.00
	3.30pm to 8pm*	£3.00**

(\*\*On door only & with NUS ID)

\* Or until the beer runs out!

If you are lucky enough to look under 25 years old, please bring photo ID and note that you must be over 18 to gain admission. A minimum of 150 tickets for each session will be available on the door, 20 minutes after the start of each session. So those who buy their tickets in advance will enter the venue first. The ticket price includes a souvenir glass and programme. Card-carrying CAMRA members can also obtain beer tokens worth £2 at the CAMRA membership stand. If you join CAMRA on the



day, you will also receive £2 beer tokens and a copy of the *Good Beer Guide*. Please bear in mind that the popular beers sell very quickly, and, as it takes at least 48 hours for beers to settle, cannot be replaced.

Advance tickets will be available from Monday 11 January to Friday 11 March from the following outlets: Evening Star, Brighton; Gardener's Arms, Lewes; Duke of Wellington, Shoreham-by-Sea; Selden Arms, Worthing; and Beer Essentials, Horsham.

For postal sales, please state which session(s) you require and enclose a 9x4 SAE with your cheque, made payable to "Sussex CAMRA Beer & Cider Festival" and send to SBB&CF Ticket Sales, 16 Connell Drive, Woodingdean, Brighton, BN2 6RT. No refunds will be processed after the 9 March 2016.

All bars will operate a token system. Token refunds will be given for whole £'s only and before 'time' is called at the bar. Surplus tokens may be deposited in the charity box and will be passed on to our Festival Charity SERV Sussex (Service by Emergency Rider Volunteers).

For more information, see the festival website [www.sussexbeerfestival.co.uk](http://www.sussexbeerfestival.co.uk).

If you would like to volunteer to work at the festival and have not done so in the past, please see the website.



All 2016 festival enquiries to: [camrahove@btinternet.com](mailto:camrahove@btinternet.com) or 07450 656148.

We look forward to seeing both old friends and new in March!

**Ruth Anderson**  
*Festival Organiser*



The 2015 Beer of the Festival award went to Ayr Brewing Company for their Rabbie's Porter. On Friday 2 October, joint festival-organiser John Kirkland presented the certificate on-stage at the Ayrshire Beer Festival, Troon. Photograph is by courtesy of Stuart McMahon and shows (left to right) Anthony Valenti (Ayr Brewing), Ray Turpie (CAMRA Scotland & Northern Ireland Director) and John.



Known locally as Wipers this 17th century pub offers five real ales and locally produced food.

Nestled behind Ypres Castle the pub is ideally located to enjoy the surrounding views from the pretty beer garden.

Live music is provided every Friday & Sunday night.

**Ypres Castle Inn**  
Gungarden  
Rye  
East Sussex  
TN31 7HH  
01797 223248

[www.yprescastleinn.co.uk](http://www.yprescastleinn.co.uk)



# SUSSEX PUB SCRATCHINGS

*News of new developments and updates on the Sussex pub scene will be gratefully received by the Editor for consideration in Scratchings. The standard disclaimer on p. 3 applies to all items.*

## ■ ARUNDEL



**The Norfolk Arms Hotel** now has Arundel Gold and Castle on hand pump at £4.00 and £3.50 a pint respectively.

The latter was enjoyed in good condition in late August. The Hotel held its first Real Ale & Cider Festival in October.

## ■ BATTLE

Four hand pumps are now in action at the **Squirrel Inn**, Harveys Best being a regular, with the other three serving varying Sussex beers. Reports are that the changes have increased the sales of real ale. The pub, with relatively new owners, is about one mile west of Battle on the A271.

## ■ BEXHILL-ON-SEA

After a long and protracted planning application, J D Wetherspoon has been granted permission to convert the former Picture Playhouse, Western Road, in the town centre. Two adjacent, semi-derelict shops have also been purchased, making for a sizeable redevelopment. The cinema, which dates from 1921, was known as the Redstack Playhouse when it finally closed in 2008. Work is expected to begin shortly, with a view to opening by mid-2016.

## ■ BOGNOR REGIS

**Jacks Beer & Burger Joint** no longer sells real ale. The two hand pumps have been removed

and replaced by keg fonts.

## ■ BRIGHTON



**The Seven Stars** is no longer a Young's pub, having been taken under the control of Indigo, with a corresponding improvement in the beer choice: three hand pumps were serving on a mid-October

visit Brighton Bier West Pier, Firebird Pacific Gem and Langham Saison. There are also five fonts for craft keg beers.

**The Font** (once the Font & Firkin) is now selling real ale: Harveys Best, Sharp's Doom Bar and Greene King IPA have been seen on the three hand pumps at various times over the past months.

## ■ BURWASH WEALD



**The Wheel** reopened with new tenants in late August after being redecorated to provide a light and spacious

interior. Three hand pumps initially offer Harveys Best, Sharp's Doom Bar and one changing guest beer; food is served, too.

## ■ CAMBER

**The Green Owl** has changed hands; Paul and



# Beer Tent



**[www.ale-inatent.co.uk](http://www.ale-inatent.co.uk)**

**Portable Bar selling Real Ale, Cider and Mead  
Ideal for Parties, Festivals, Village & Country Fayres**

**Charity events are free of charge  
with 20% of all profits donated to the charity**

**MARQUEE HIRE AVAILABLE**

**07778 551352 / [info@ale-inatent.co.uk](mailto:info@ale-inatent.co.uk)**

The Halsey family and all the team welcome you to

## **THE CROWN INN** **- NEWICK -**



**A family-friendly, dog-friendly pub, with a large rear garden  
Home-cooked food, Harveys beers and  
a regularly changing selection of fine guest ales**

---

**[thecrownatnewick@gmail.com](mailto:thecrownatnewick@gmail.com)  
[www.thecrownatnewick.co.uk](http://www.thecrownatnewick.co.uk)**

---

**THE CROWN INN**  
22 Church Road, Newick, BN8 4JX  
01825 723293

---



Tina sold the pub after being at the helm for the last twenty-three years. The new owners, Peter and Madeleine, took over in August with the same emphasis on real ale and food from local sources. Recent beers were from Old Dairy, Weltons and Young's, all in top condition.

### ■ CHELWOOD GATE

The **Red Lion** (Shepherd Neame) has struggled for the past two or three years, but is now in the capable hands of Greg and Angelena Churcher and Peter Hill. The pub has had a bit of a makeover and the kitchen has been refurbished. Opening hours are now all day every day with food available from noon onwards. Two Shep's ales are on, together with Harveys Best and quality is good.

### ■ CHICHESTER

Chichester District Council has rejected an application to convert the former St Pancras Antiques Shop, a Grade-II listed building empty for eight years, to A4 use for a micro pub. The refusal was on the grounds that "the proposed use would result in the introduction of night use and result in harm to the living conditions and quality of life for the neighbouring properties (particularly the first floor residence above the proposed micro pub, which has no internal connection to the application site)."

### ■ EASTBOURNE

The **Dolphin**, South Street, intends to hold quarterly beer festivals. A visit to the first of these, on the last weekend in September, found such delights as Bristol Beer Factory Milk Stout and Arbor Oz Bomb but we were too late for the Thornbridge Jaipur! Prices were £3 a pint and £1 a third. Despite the pub being let down by non-delivery of the stillage, a good selection of five real ales in very good condition was maintained on the hand pumps. Three real ciders were also available.



The **London & County** (JDW) now has three traditional ciders available at any one time, including the amazing range from Thistly Cross.

The **Printers Bar Brasserie**, Station Street, is primarily a live music and

theatre venue, opened in July 2015, but experimenting with real ale. There are two hand pumps; one real ale is always available, so far usually sourced from Sussex breweries. Opening is restricted to Tuesday to Saturday evenings.

Punch Taverns has put the **Town House** on the market with a price tag of £500K. This town centre pub only last year reopened following a sizeable refurbishment. It has had numerous names, including Ancient Lights, Slug & Lettuce, Royal Sovereign, but is more famously remembered as the Prince of Wales, when it was a Watneys and Phoenix tied house.

The **Cavalier**, Carlisle Road, remains closed, with vandalism being noted to the windows.

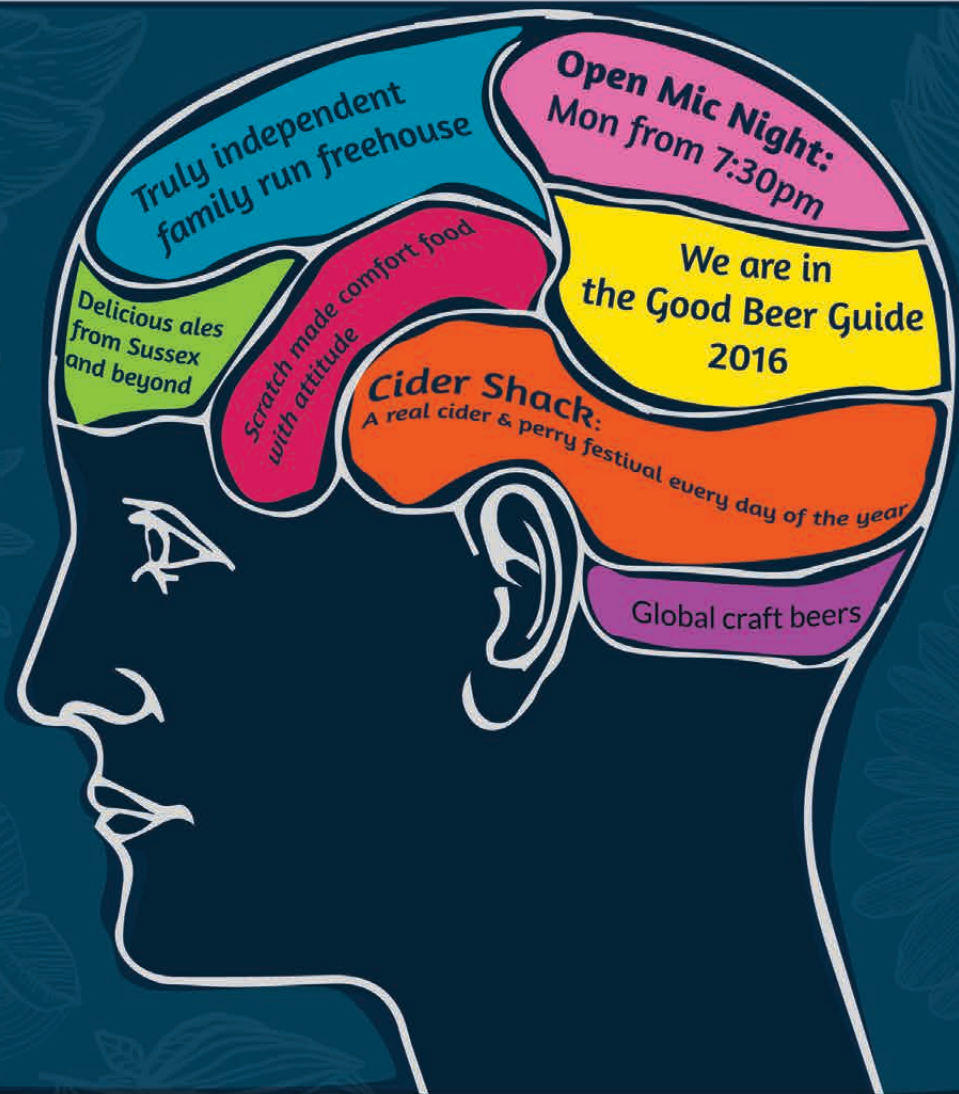


In the Old Town, the **Star** is undergoing refurbishment work by Enterprise Inns, and with a new tenant in place.

Ale quality has improved as a result. Harveys Best and Young's Special are the regulars; a third hand pump is available for rotational guests.



# THE WESTBOURNE



**YEASTIE  
BOYS**



90 Portland Road, Hove, BN3 5DN

01273 823 633

thewestbournehove.co.uk

@WestbourneHove

thewestbournehove

## ■ HAILSHAM



The **George Hotel** (JDW) now has three traditional ciders available at any one time. Rather than being

refrigerated, they are kept in a cool room for an ideal serving temperature. The availability of LocAle beers has increased to two at the weekend. These are on rotation, and include offerings from Dark Star, Kissingate, Long Man, Turners and King Beer.

## ■ HASTINGS

The Shepherd Neame tied house, the **Stag** in the Old Town has been under new management since August. It continues to take beer from Shep's micro brewery as well as its regular ales. No food is served at present.

## ■ HORSHAM

Lyndsey has left the **Tanners Arms**, which currently (September) remains closed. The building has been refurbished and redecorated but the pub signs remain so we await the outcome with interest.

## ■ LANCING

The **Crabtree** is under new management but remains under the Enterprise chain of properties. There has otherwise been little change with a regular rotation of beers as before; at the time of reporting these were Timothy Taylor Golden Best, Otter Amber, Theakston XB and the house regular Fuller's London Pride. There is a new food menu with a separate lunch menu and the kitchen has longer opening hours than previously.

## ■ LITTLEHAMPTON

There are normally twelve real ales on offer and around fifteen traditional ciders to sample, as



well as quality lagers and wines and a good menu, at the recently opened **Tap & Barrel** brewpub on Duke Street.

There is a lovely beer garden with children's play equipment available. The onsite Littlehampton Brewery plant is Anchor Springs under the same ownership but a new name.

## ■ LOWER BEEDING

Formerly Hall & Woodhouse, the **Plough** is now a free house. The new owner is putting on a changing range of beers at reasonable prices to see what goes down well. Harveys Best, Skinners Ginger Tosser and one from Weltons were on offer during a recent visit.

## ■ PAGHAM

The planning inspector has given the Co-op the green light to open a convenience store on the ground floor of the former **Kings Beach Hotel**.

## ■ PETT LEVEL

The **New Beach Club** held its first Beer Festival in August, which proved very popular with locals and visitors. It was good to see beers from Beachy Head and the new micro brewery at Greene King. Sarah and Robin are to be congratulated for everything about this mini festival.

## ■ PORTSLADE



The refurbished **Railway** has six hand pumps. A mid-August visit found four beers: Harveys Best, Adnams

Ghost Ship, Firebird Saison d'Ete and Marston's Pedigree New World Pale Ale. A half

# THE EGREMONT WORTHING



Traditional Pub • Lovingly Kept Real Ale • Luxury Surroundings  
New Home-Cooked Food Menu • Craft Beer • Great Party Venue  
Fine Wine & Lagers • Friendly Staff • Bar Games • Quiz Nights

## BEER FESTIVAL

Thursday, Nov 26 - Sunday, Nov 29

18 ALES ON TAP FROM

Burning Sky, Wylam, Goldmark, Hastings, Titanic, Virbant Forest,  
Green Jack, Dark Star, Rebellion, Box Stream, Salopian, Hop Back,  
Taylors, Purple Moose, Egremont Brewing Co, Harveys

LIVE MUSIC AND FOOD ALL WEEKEND

32 Brighton Road 01903 600064



theegremont

Serving prize ales and traditional stout at the junction of  
Brighton Road and Warwick Road since 1835



of the latter was enjoyed in good condition. The other two pumps were offering Westons Rosie's Pig and Country Perry.

The **Harbour View** (previously the Alexander Tavern) is closed and due for impending demolition.

#### ■ RYE

A couple of Three Legs beers were on in the **Standard** on a recent visit, while the **Queen's Head** now has its house beer produced by Turners.

#### ■ ST LEONARDS ON SEA

At the **Dripping Spring**, new landlord Kyle and his staff have been building-up trade, including offering many different beers in recent weeks.

The **Duke**, Silverhill, always has beers from Rother Valley; Copper Ale was enjoyed on a recent visit.

#### ■ SEAFORD



A notice outside the **Seaford Head Golf Club** tells us that everyone is welcome. Inside the clubhouse on

a recent visit, Harveys Best, Long Man Copper Ale and Best Bitter were on offer in good condition. Food is also available. The bar provides panoramic views over surrounding areas.

#### ■ TICEHURST

Three local real ales are now available at the **Cherry Tree Inn**. A recent visit found Whitstable Native Bitter and Firebird No.79, alongside the regular, Harveys Best.

#### ■ WESTFIELD

The **New Inn** held its first beer festival over the

August Bank Holiday weekend, with beers from Rother Valley, Hastings, Long Man, Franklins, Isfield and Beachy Head on the stillage to the rear of the garden, and, on the bar, Harveys Old! Many locals and visitors attended, so the event is to be repeated.

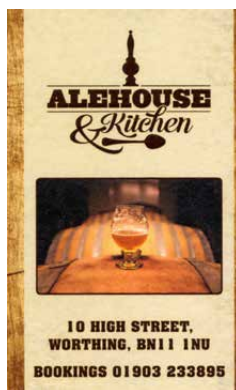
#### ■ WESTHAM

The **Heron** (once the Pevensey Castle Hotel) has a new tenant, Natalie, who previously managed the Dolphin in Eastbourne. She was always passionate about looking after her real ales and it still shows! Food is served too and the pub is now open until 'late' on Friday and Saturday nights.

#### ■ WORTHING

The former Spy Glass Inn is being transformed into a child and dog-friendly restaurant bar & grill, to be called the **Cow Shed**. According to its Facebook page the new establishment will offer "wonderful wines, awesome ales, brilliant burgers, luscious lagers and a nice sit down."

What was the Stage has been acquired by the Beach House, Marine Parade and is to receive a new identity as the **Corner House**. The pub is said to date back to at least 1811 and was originally known as the Golden Anchor, later abbreviated to the Anchor. In 1988 it was became the Jack Horner and later adopted the Stage name.



The **Alehouse & Kitchen** has a loyalty card scheme in operation. Buy one of the house-brewed ales and receive a stamp. Fill out all eight and get a free pint.



# The Coopers Arms

Our 7<sup>th</sup> Annual winter ales festival

## "DARK & DELICIOUS" 2016

Friday 29<sup>th</sup> – Sunday 31<sup>st</sup> January 2016

Open all day Friday, Saturday & Sunday, food available.

At least 11 cask conditioned ales including **Fullers Golden Pride 8.5%**, **The Kernel Export Stout 7%abv (key keg)**, **Moor Old Freddy Walker 7.4%(aged 1 year)**

Ring Dave on 01892 654796 for more details

The Coopers Arms, Coopers Lane, Crowborough, East Sussex, TN6 1SN

**"THE HOUSE OF ALE REPUTE"**



41 Lyndhurst Rd  
Worthing BN11 2DB  
(near Worthing Hospital)

### 'FUN QUIZ NIGHT'

Last Wednesday of  
every month

### 'CURRY NIGHT'

Every Friday

Still West Sussex's premier  
free house! Follow us on

 [@seldenarms](https://twitter.com/seldenarms)



# THE SELDEN ARMS

*"real pub, real beer, real people"*

## 15<sup>th</sup> WINTERFEST

11am, Friday 29<sup>th</sup> Jan – 11pm, Sun 31<sup>st</sup> Jan 2016

- \* 30 beers available right from the start including a "mystery beer" and something 'well-aged'!
- \* 2 ciders, 1 perry and 2 craft beers also available
- \* Curries available on both Friday and Saturday nights
- \* Hot pies available all day

*Home of "The Little Belgian Beer Emporium" which  
boasts over 120 different bottled Belgian beers!*

# The Sussex Bus to the Pub Group



## Join us on our travels!



The **Sussex Bus to the Pub group (BttP)** has been running since **May 2009** and now attracts participants from many areas of our fine county, so if you too would enjoy visiting different pubs with fine ales and informal convivial company without the constraints of the car, then **BttP** may just appeal! Itineraries and the number of pubs visited vary but often it is possible for participants to dip in or out of a trip to suit. Often there is a short paved or metalled road walk from the nearest bus stop to the pub. If it is more than an half mile then we will show an approximate distance and if it is across footpaths which could be muddy or uneven, then you will also see a walking boot symbol.

With so many good pubs struggling to survive in the current economic climate and County Council budget cuts threatening the subsidised bus services that serve many rural communities, join us in 'supporting them'.

Local Bus timetables can be found at:  
**Brighton & Hove** [www.buses.co.uk](http://www.buses.co.uk)  
**Compass Bus** [www.compass-travel.co.uk](http://www.compass-travel.co.uk)  
**Emsworth** [www.emsworthanddistrict.co.uk](http://www.emsworthanddistrict.co.uk)  
**Metrobus** [www.metrobus.co.uk](http://www.metrobus.co.uk)  
**Seaford & Dist.** [www.journeysolutions.co.uk](http://www.journeysolutions.co.uk)  
**Stagecoach** [www.stagecoachbus.com/south](http://www.stagecoachbus.com/south)  
**Sussex Bus** [www.thesussexbus.com](http://www.thesussexbus.com)  
**Cuckmere Valley** [www.cuckmerebuses.org.uk](http://www.cuckmerebuses.org.uk)

Some of you reading this may also be interested in Pete Brown's bi-monthly **Trains to London Pubs (TTLP)** group (see the Diary Dates).



## November

**Wednesday 11 Around Lancing & Shoreham;** meet Stanley Alehouse from noon then Old Star & the Wellie.  
**Thursday 19 to Nyetimber and Chichester;** meet Chi. Bus Stn. for 11.43 Stagecoach 60 to Iglenook (GBG) then return for Chi. Pubs.

**Thursday 26 Carshalton Awayday;** meet 11.00 at East Croydon Stn. for 11.18 TfL X26 to High Street then short walk to Hope (GBG), West Street for their 'winter ales' festival.



## December

**Thursday 3 to Laughton then around Lewes;** meet from 11.30 in JHT then 12.15 Compass 143 to Roebuck then return to Snowdrop (GBG) & others.

**Thursday 10** to Bexhill & St. Leonards; 10.32 train from B'ton to Bexhill (buy ticket to St. Leonards) for Albatross Club then Stagecoach Wave to Warrior Sq. for local bus to Tower (both GBG).

**Wednesday 16 Around Worthing;** meet Selden Arms (GBG) from 11.30 then onwards to Brookstead Alehouse, Anchored and seafront.

**Monday 21 to Friday Street & Horsham;** either 10.27 Metro 23 from W'tg. (or St'coach. 17 from Ch'hill Sq. at 10.00) to Horsham Bus str or 11.49 Metro 93 to Kingsfold then footpath walk (approx. 1.5m) with some stiles to Royal Oak; then back to Malt Shovel (both GBG).

**Wednesday 30 Around Brighton;** meet Hand in Hand from noon then Beer Dispensary (GBG) and onwards.



## COMPASS TRAVEL January

**Monday 4 to Petworth & Byworth;** either meet Dave O for 11.05 Stagecoach 1 from South Street W'tg (or 10.45 Compass 99 from West St. Chi) to Petworth Square. A short walk to Stonemasons (approx. 0.5m); then back to the Square for bus to Black Horse (GBG).

**Wednesday 13 to Ashurst Wood, East Grinstead & Dormansland;** either 10.15 Metrobus 270 from C'hill Sq. to AW Three Crowns to meet Leader Mike V for short walk (or 10.56 Metro 291 from Crawley or Three Bridges

to Three Crowns then short walk, 0.4m, via Woods Hill Lane) to Maypole. Then 13.21 Metro 291 to Sportsman and on to Old House at Home (GBG).

**Thursday 21 to Falmer, Brighton Lewes Road & City Centre;** meet Mike J from noon at Swan (GBG) then onwards and later to the newish BrewDog bar.

**Wednesday 27 to Warringlid and Bolney;** 10.35 Sussex Bus 40 from Churchill Sq. to meet Ken or Geoff at H'Heath Perry Mount Road for 12.10 Compass 89 to Half Moon (GBG) then 14.28 C.89 to Bolney Stage. Return by 15.42 Metrobus 273 either direct to Brighton (or for locals either a veritable choice or via Cuckfield to the Talbot and return via 16.11 Sussex Bus 40 to HH).

**METROBUS**

**February**

**Wednesday 3 to Emsworth, Bosham & Chichester;** Meet Pete B at Chi. bus station for 11.42 Stagecoach 700 to Coal Exchange (GBG). Return to Bosham roundabout at 13.50 or 14.10 with time for a swift half in the White Swan before catching Stagecoach 56 at 15.00 to Old Town for Anchor Bleu. Return to Chi for town centre pubs on 56 at 16.45.

**Monday 8 to East Dean & Eastbourne;** 10.30 B&H 12x from Churchill Sq. to Tiger Inn (GBG) then 12.56 bus to Old Town to meet group leader John J for Crown (GBG) & Lamb.

**Wednesday 17 to Billingshurst & Horsham;** either meet Dave O at South Street W'tg for 10.27 Metro 23 to Washington for 11.12 Compass 100 (or 11.03 train from Barnham) to Pulborough Stn. where the C.100 continues at 11.38 to Kings Head; then on to Malt Shovel (GBG).

**IMPORTANT: please be aware that as our itineraries have to be planned some months in advance we are unable to predict whether or not there may be timetable changes affecting any of the bus routes we plan to use in the programme above. Accordingly, it is strongly recommended that you register your email**

**address to join our circulation list and thus ensure that you are kept up to date with any changes.**

**For further info or to join our mailing list Email [stuartelms@ntlworld.com](mailto:stuartelms@ntlworld.com) or ring 07817 058 928**



The BttP trip on Thursday 8 October finished up at the new Tap & Barrel brewpub in Littlehampton. As the picture shows, a good time was had by all!

**BALLARD'S  
BREWERY**



- Annual Beer Walk  
Sunday 6th December!
- A selection of draught and bottled real ales
- Ideal for parties, weddings and functions
- Visit our brewery shop - week days 8-4
- Free local home delivery!
- Online orders and payment  
(See our website for details)



The Old Sawmill, Nyewood,  
Nr Petersfield, hants GU31 5HA

Telephone: 01730 821 362  
[www.ballards-brewery.co.uk](http://www.ballards-brewery.co.uk)

# Bru News

## The Sussex Breweries Pages

Information here is mostly supplied by the named Brewery Liaison Officer. The Brewery Liaison Coordinator for London & South East Area is Peter Page-Mitchell.

### 1648

East Hoathly, 01825 840830.

[www.1648brewing.co.uk](http://www.1648brewing.co.uk)

Facilitated by the brewery's summer facelift, tours will commence in the New Year, to include beer and food served in the Kings Head. The winter months will see **Warrant** (4.8%, porter) and **Winter Solstice** (4.3%, brewed with smoked barley).

Available to buy in the Brewery Tap will be Christmas pudding made with **Extra Oatmeal Stout** (5.5%), honey mustard made with **Bee Head** (4.6%) and onion chutney made with **St George** (4.5%).

**David Platt**

### 360°

Sheffield Park, 01825 722375.

[www.360degreebrewing.com](http://www.360degreebrewing.com)

New vessels arriving will increase capacity and an expansion of the range into different beer styles and different methods of delivery beyond cask and bottle. The vessels will allow the brewery to create these new lines as well as continuing to produce their current cask and bottles. The website has been revamped for easier navigation.

**Jason Phillips**

### ADUR

Steyping, 01903 867614.

[www.adurbrewery.com](http://www.adurbrewery.com)

Al is going well and a successful beer festival was held in September at



Steyping Cricket Club. The ales can be bought at Steyping and Shoreham Farmers' Markets on a regular basis.

**Nigel Watson**

### ALEHOUSE & KITCHEN

Worthing, 01903 238392.

Alehouse & Kitchen continues to brew and offer beers, primarily in its main outlet in Worthing, so far including **Bad Habit** (4.0%) **Cheeky Chaplin** (3.8%) and **Gargoyle Porter** (4.0%).

**Tim Walker**

### ARUNDEL

Ford, 01903 733111.

[www.arundelbrewery.co.uk](http://www.arundelbrewery.co.uk)  
West Sussex County Council has awarded the brewery a significant grant to expand conditioning capacity and install a modern kegging plant to run alongside the existing cask operation; the project is in the early planning stages. A one-off in August was **Cherry Hopper Ale**. The new special, **Smokehouse Porter**, featured in the October Wetherspoon Beer Festival; thanks to local specialists, 'Besmoke', it uses malt smoked with Sussex apple and cherry woods. New seasonal until

the end of November is dark ale **Autumn Breeze** (4.6%); forthcoming monthly brews are **Prizefighter** (4.6%, November) and **Red Nose** (5.0%, December).  
**Jeff Vinter**

### BALLARD'S

Nyewood, 01730 821362.

[www.ballards-brewery.co.uk](http://www.ballards-brewery.co.uk)

There have been two recent brews of **On the Hop**, one for draft, the other to be bottled. A special 4.0% beer, **Worthing Pier Best Bitter**, has been bottled for the eponymous pier bar.

**Barry Woodward**

### BARTLEBY'S

Brighton, 01273 275012 / 07518 485342.

[www.bartlebysbrewery.com](http://www.bartlebysbrewery.com)

The brewery was very happy to sponsor a cask of **Calico** (vegan beer) at the Hanover Beer Festival. The beers will be appearing for the next six months in pubs run by the Laine Brewery.

**BLOTBC**

### BASELINE

Small Dole, 01903 915025.

[info@baselinebrewing.co.uk](mailto:info@baselinebrewing.co.uk)

Julian has closed the brewery and sold the plant. He would now like to help someone set up a brewpub by sourcing and building the brewery at a very reasonable rate and providing advice with beer recipes and brewing. Contact details as given.

**Peter Mitchell**

### BEACHY HEAD

East Dean, 01323 423313.

[www.beachyhead.org.uk](http://www.beachyhead.org.uk)

Sales continue to increase. The new ale, **Parsons Porter** (5.0%) has been particularly well received and it will most likely become a regular seasonal. **The Famous Christmas Ale** (8.2%) will be available in cask only (bottling has ceased at the brewery) from early December at



selected outlets. A potential apprentice brewer has been found and should start sometime in the New Year.

**Tony Harman**

## BEDLAM

Albourne, 01273 978015.  
www.bedlambrewery.co.uk  
Brewing capacity is doubled with the installation of new fermentation vessels; all of the brews are now available by bottle as well as draught. Harvesting of the hops at the farm will take place in September; with **Pilgrim** (3.7% harvest ale) available in October on a first-come first-served basis. More pubs around the Brighton and Hove area now stocking Bedlam beers; a full list of outlets is on the website. The team recently hosted the Brighton HomeBrew club at BrewDog Brighton, where they talked through their brews and expansion plans to an enthusiastic crowd of home brewers.

**Peter Mitchell**

## BEER ME

Eastbourne, 01323 729967.  
www.beermebrewery.com  
November will see the brewery's first birthday; look out for special promotions at the café, where the permanent beers, **Light**, **Dark** and **White**, are all selling well. A one off **Oyster Stout** will be brewed for the November Oyster Festival. A Christmas beer, of about 9.0%, is also in production.

**Scott O'Rourke**

## BLACK CAT

Palehouse Common, Framfield, 01825 840879.  
www.blackcat-brewery.com  
Due to popular demand it is planned to increase the beer range very soon. The team have ready a recipe for a 3.4% ale; they aim to debut a double chocolate stout and are seriously considering a real lager! The ales

feature in local and regional festivals as well as pubs local to the brewery. All are available in firkins, pins and cask-conditioned bottles.

**John Packer**

## BRICK HOUSE

Patcham, Brighton, 07708 384604.  
brickhousebrewingco@gmail.com  
Bottling has ceased for the foreseeable future. **Requiem** is available in draft form at Quaff Off Licence, Fiveways, to take away in 1-litre bottles. A small batch is supplied there weekly, ensuring that the beer is always fresh and in peak condition.

**BLOTBC**

## BRIGHTON BIER

Brighton, 01273 567374 / 07515 956976.  
www.brightonbier.com  
The brewery won a Gold Medal at the International Beer Challenge 2015 for their self-titled **Brighton Bier**, 4.0% pale ale. Recently launched in cask and proving very popular is **Free State – 21st Century Brown**, a new and complex brown beer with Equinox hops and eight different grains including rye and oats.  
**James Eddleston**

## BURNING SKY

Firle, 01273 858080.  
www.burningskybeer.com  
Two new fermenters and a grist mill are now up and running and an automatic bottling machine will be delivered soon. The brewery recently collaborated with the BrewDog Brighton pub to produce a wild fermented 3.5% tart, hoppy, farmhouse pale. This will lead to a series of low-gravity beers. Both **Anniversaire**, aged in chardonnay barrels, and the 8.0% **Monolith**, aged in red wine vats, will once again be available in both keg and bottles early next year; and the 4.8% cask **Porter** will be produced this winter. **Saison**

**L'Automne** is brewed with hibiscus, and with rosehips picked by Mark on the South Downs, to produce a lightly-spiced refreshing beer.

**Ruth Anderson**

## CROOKED BROOK

The Briars, Copthorne Bank, Copthorne, RH10 3QZ, 07462 523013.  
simon@crookedbrook.co.uk  
www.facebook.com/crookedbrook  
New beers, such as **3 Heads Pale Ale** (4.5%, with lots of late American hops), are being brewed for festivals in Redhill, Brockham and Worthing. The cooler months will see **Euston Porter** (6.0%) and **Smugglers Best Bitter** (4.3%). Planned new fermenters will increase capacity and KeyKegs are selling well.  
**BLOTBC**

## DARK STAR

Partridge Green, 01403 713085.  
www.darkstarbrewing.co.uk  
Dark Star are delighted that **Revelation**, 5.7%, won the Strong Bitter category in the Champion Beer of Britain competition at the GBBF, Olympia. Andy from the brewing team was sent a text message from Olympia as he was busy back at the brewery on the day. He was particularly pleased with the result, having dedicated a great deal of time perfecting the recipe in order to keep that massive fresh hoppyness without it being over bitter and causing too many headaches! By coincidence, **Revelation** will be the second (after **APA**) of the beers to be canned.

**Clive Watson**

## DOWNLANDS

Small Dole, 01273 495596.  
www.downlandsbrewery.com  
After celebrating their second Beer of the Festival win in a row at Yapton, this time with **Devils Dyke Salted Caramel**, the team is now looking forward to the winter season.

**Pyecombe All Ye Faithful** is rested this year due to the lack of demand for strong, dark, festive ales but the line up will definitely include **Old, Christmas Pud** and **Southern Hemisphere Pale**. There are also plans to brew at the end of December a successor to **CAM-RAA TWO**, which should be released from the conditioning tank in time for Easter.  
**Roger Coton**

## FILO

Hastings, 01424 420212.

[www.filobrewing.co.uk](http://www.filobrewing.co.uk)

With winter approaching, we can look forward to the return of **Our Auld Ale** (6.5%) and **Cardinal** (4.6%) to supplement the regular beers, **Churches Pale**, **Crofters**, **Gold** and **Old Town Tom**.  
**Bill Turner**

## FIREBIRD

Rudgwick, 01403 823180.

[www.firebirdbrewing.co.uk](http://www.firebirdbrewing.co.uk)

Plans are advanced for the addition of another 2000-litre conical fermenter, bringing the total to eight. New beer **Black Eyed Porter** (5.5%) is now available in keg and bottle. October sees the return of **Old Ale XXXX** (4.5 %) while available during October and November is a single (WGV) hop ale at 4.2%. Gearing up for Christmas is a strong ale, cask only; also **Barnabus Doppelbock** (7.0%) keg and bottled, while **Festive 51** (4.8%) - a tribute to King and Barnes' much-loved Festive, first brewed in 1951 to commemorate the Festival of Britain - is in cask only for December and January.

**Roger Tofts**

## FRANKLINS

Bexhill, 01424 731066.

[www.franklinbrewery.co.uk](http://www.franklinbrewery.co.uk)

New recipes, **N.Z.I.P.A.** and the black version **All Black IPA** (both 5.5%) have been selling well. Autumn

and winter see **Grapefruit Pale** (4.5%) and **Franklins Explorer** (6.0% red rye), join the portfolio alongside popular classics **English Garden** and **Mama Knows Best**. Expect to see a new logo, pump clip design and website by the end of November. It is planned to undertake work on the brewery before the year-end, after which it is hoped to offer brewery tours again. The team is currently working with a local chef to hold various Pop-Up food and beer matching nights across the county.

**Mac McCutcheon**

## GOLDMARK

Poling, 01903 297838 / 07900

555415.

[www.goldmarks.co.uk](http://www.goldmarks.co.uk)

Beer sales continue to increase with the introduction of a new **American Hop Idol** recipe that changes every month to feature a new, dominant hop variety. Mark has secured all the brewery's hops for 2016 and continues to trial new varieties for hop farmers to provide feedback. Two new wholesalers now enable the beers to be enjoyed in Cumbria and Scotland. New brewery tours will occur on the second Saturday each month; these can be booked on the website, CAMRA discount available.

**Jim Waterston**

## GOLDSTONE

Ditchling, 01444 257053.

[www.goldstonebrewery.co.uk](http://www.goldstonebrewery.co.uk)

The company is concentrating on the launch of its new Sea Cider product, **Plan Bee**.

**Paul Free**

## GREYHOUND

Smock Alley, West Chiltington, 07973 625510.

[www.greyhoundbrewery.co.uk](http://www.greyhoundbrewery.co.uk)

A very busy summer for the brewery with the beers in festivals over West Sussex and an increasing distribution

to fifteen local pubs - new ones include the Kings Arms, Arundel; George and Dragon, Dragons Green; and the Crown Inn, Chiddingfold. **Amber Eyes** (4.2%) is now in most of these pubs while the popularity of the two specials, **Blonde**, 3.9% pale ale, and **B46**, 4.6% dark ale, has made them permanent features. Look out for some special dark beers for the coming Halloween and Christmas festivities and a small-batch production of a green hop beer available from the end of October  
**Ray Pilkington**

## GRIBBLE

The Gribble Inn, Oving, 01243

786893.

[www.gribbleinn.co.uk](http://www.gribbleinn.co.uk)

**C.h.i. P.A.** sold out quickly at both the GBBF and the Portsmouth Victorious Festival. The brewery and pub are now in full swing following last year's fire and regularly available for the coming season are **Reg's Tipple** (4.8%), **Sussex Quadhopper** (4.0%), **Gribble Ale** (4.1%), **Fuzzy Duck** (4.3%), **Plucking Pheasant** (5.2%), **Pig's Ear** (5.8%) and **Wobbler** (7.2%).  
**Chris Wright**

## GUN

Heathfield, 01323 700200 / 07900

683355.

[www.gunbrewery.co.uk](http://www.gunbrewery.co.uk)

Beer sales continue to go well and more casks have arrived to cope with demand. **Project Babylon** remains the biggest seller. This along with **Zamzama IPA** and **Parabellum** - the three strongest beers in the range - are now available in KeyKeg, although cask beer will remain the core of the business. The full range of bottle conditioned beers, which now also includes **Scaramanga Extra Pale** (3.9%), is now available from The Secret Cellar, Wadhurst; Southdown Cellars, Lindfield; Eggs to Apples, Hurst Green; Symposium, Lewes and Middle Farm, Firle. By the

time you read this, the new website will be live.

**Steve Obey**

## HAMMERPOT

Poling, 01903 883338.

[www.hammerpot-brewery.co.uk](http://www.hammerpot-brewery.co.uk)

A fantastic summer was had at the Vinery, celebrating the brewery's 10th anniversary with awards for **Madgwick Gold** (5.0%), **Mosaic Pale** (4.1%) and **Summer** (3.7%) and being announced as finalists in the Sussex Food & Drink Awards! Look forward to autumn and winter and **R.I.P.A. - Black IPA** (5.0%), **Oyster Pond Stout** (4.2%), **Shepherd's Warmer** (5.5%), **Baltic Porter** (8.0%) and **Australian Pale** (4.1%).

**Tim Walker**

## HARVEYS

Lewes, 01273 480209.

[www.harveys.org.uk](http://www.harveys.org.uk)

This year's **Old Ale** has been well and truly launched. A packed thanksgiving service in Cliffe Church was followed by an outpouring of dance and song from local Morris sides and choirs amidst a sea of devotees in the brewery yard. The 2015 vintage of **Christmas Ale** has been brewed and is gently maturing in tank. After 225 years, Harveys are holding steady and facing today's challenges. Having produced a keg beer between 1964 and 2000 (when the plant was swept away in the flood), Harveys have acknowledged the growing resurgence of keg and will shortly be installing new kegging plant from Belgium. As ever, the aim is to cater for every element of the market – and more initiatives are planned. Harveys beers achieved some notable awards since the last issue: see the Spotlight on Breweries section for details.

**Jack Wilkinson**

## HASTINGS

St Leonards-on-Sea, 01424 572050.

[www.hastingsbrewery.co.uk](http://www.hastingsbrewery.co.uk)

The latest permanent beer is **Breakfast Porter**, a remix of **Porter** with oats, cold-pressed coffee and a large amount of Chinook and Columbus hops added to the traditional British recipe. Other recent seasonal and limited edition beers have included **Pacific Wheat** (4.7%, US-style hoppy wheat beer) and **Citra-Ella IPA** (6.8%, with 100% Maris Otter wheat, specially brewed for the Maris Otter 50 Beer Festival). Currently, the can-conditioned range includes **Mosaic Pale** (5.0%), **Breakfast Porter** (4.9%), **Four Cees APA** (5.7%), and **Down Under IPA** (6.0%).

**Peter Page-Mitchell**

## HEATHEN

Haywards Heath, 01444 456217 / 07825 429428.

[www.heathenbrewers.co.uk](http://www.heathenbrewers.co.uk)

The brewers continue to experiment, producing a 5.1% golden beer with mulberries and meadowsweet, a precursor to aspirin. Called **Chimera**, it has the potential to cure any headache you may have after drinking too much of it! Also new is a 4.8% dark beer, **ipaD**, which hovers somewhere between an IPA and a porter! Despite its name, it does not come in tablet form. The three beers supplied to the Amberley Beer Festival – **Chimera**, **Honey** and **Porter** – were all very well received.

**Ruth Anderson**

## HEPWORTH

Horsham, 01403 269696.

[www.hepworthbrewery.co.uk](http://www.hepworthbrewery.co.uk)

Purchase of the new brewery site near Brindsbury has now been completed and building work is underway with the move expected to take place in spring 2016. **Daws IPA**, brewed with award-winning hops, has been well received.

**Harvest Ale** is now available and **Old Ale** was launched in mid-

October.

**Chris Stringer**

## HIGH WEALD

East Grinstead, 07836 291430.

[www.highwealdbrewery.co.uk](http://www.highwealdbrewery.co.uk)

To meet ever-increasing demand from local stores and markets, most bottling has been outsourced. Cask sales to free houses and other outlets have also grown, with all three core ales continuing to prove popular. Andy also continues to supply CAMRA and other local festivals. A successful debut at the GBBF with **Charcoal Burner** also served as the launch of the new strikingly designed pump clips and bottle labels. Best has been renamed **Chronicle** and the golden ale is now simply called **Greenstede**.

**Jonathan Samways**

## HOP YARD

Forest Row, 07769 313410.

[www.hopyardbrewing.co.uk](http://www.hopyardbrewing.co.uk)

No new beers this time but the venue remains very popular and busy hosting various events with music, food and beers, such as the Forest Row Festival in September.

**BLOTBC**

## HURST

Hurstpierpoint, 07866 438953.

[www.hurstbrewery.co.uk](http://www.hurstbrewery.co.uk)

Newly launched is **1862 Premier Ale**, a 4.8% rum-infused beer with added Captain Morgan Rum. The brewery continues to expand and is looking at taking on extra space.

**Steve Floor**

## ISFIELD

Framfield, 01825 750633 / 07803

716758.

[www.isfieldbrewing.co.uk](http://www.isfieldbrewing.co.uk)

The brewery is now concentrating on autumn and winter brews, ruby ale **Ethel Red** (4.4%) and the dark premium bitter **Toad in the Ale** (4.8%). Cold weather artillery will also be provided in the form of



**Flapjack Oatmeal Stout** (5.3%), some special batches of which will be cask-aged for longer (only available to pre-order).

*John Packer*

## KEMPTOWN

The Hand in Hand, Brighton, 01273 699595.

Still not brewing.

*Keith Newell*

## KILN

Burgess Hill, 07800 556729.

[www.thekilnbrewery.co.uk](http://www.thekilnbrewery.co.uk)

**Small Batch Red ale** (4.5%) has been available in bottled form at Quench Bar & Kitchen, among other places. A rugby themed beer, **Swing Low**, an English pale ale of session strength, has been on draught at the Burgess Hill Inn (a.k.a. the Top House).

*Paul Fere*

## KING BEER

Horsham, 01403 272102.

[www.kingbeer.co.uk](http://www.kingbeer.co.uk)

Welcome to Meeghan Murdoch, who has joined the team as Operations Manager. **Old** is available again from October to March. **Wonderland**, the lighter, 4.1%, Christmas pint, was extremely popular last year and will be back this year, along with more of the special spiced version of **Festive**.  
*Mike Head*

## KISSINGATE

Lower Beeding, 01403 891335 / 07909 975664.

[www.kissinggate.co.uk](http://www.kissinggate.co.uk)

Demand for **Black Cherry Mild** has increased significantly following its Speciality Class Silver Medal at the GBBF, with orders coming in from much further afield. New beer **Power Blue** (blueberry porter) has been well received at various festivals. A 10% barley wine, **Murder of Crows**, was officially launched at the brewery's Octoberfest. It will also be on stillage at the Hope in

Carshalton's Dark Beer Festival, 26-28 November. The bottled beer range has been increased to include **Sussex, Black Cherry Mild, Chennai IPA, Micro Lot Coffee Porter** and **Toffee Cog**. Bottles are only available to buy direct from the brewery  
*Roy Bray*

## LAINE

The North Laine, Brighton, 01273 683666.

[www.drinkinbrighton.co.uk/north-laine](http://www.drinkinbrighton.co.uk/north-laine)  
A cask Saison will be available soon in Kiwi, Cherry and Pineapple versions, as well as a straight Saison. It will be followed by a single hop series, showcasing individual hops on each brew. This year's Christmas beer will be a brandy porter, to be brewed in October and put aside to allow aging time. Also being brewed is **Gig Buddy**, a 4.3% US-hopped pale ale for the Gig Buddy Project, aiming to help people with disabilities get out and enjoy the nightlife without feeling restricted.

*Ruth Anderson*

## LANGHAM

Lodsworth, 01798 860861.

[www.langhambrewery.co.uk](http://www.langhambrewery.co.uk)

Busy times up at Lodsworth where it is the 10th year of brewing. A new beer to mark the celebration is **Decennium**, 4.0%, blond and zesty using loads of American Citra and Amarillo hops, it will be on offer for some time; they like it. Also on fresh for the colder evenings is **Autumn-Ale**, 4.4%, smooth with a subtle honeyed finish.

*Peter Luff*

## LISTER'S

Ford, 01903 885950 / 07775 853412.

[www.listersbrewery.com](http://www.listersbrewery.com)

The new, extended premises is allowing for more deliveries, more brews and more beers to be created. A refreshing **Golden Ale** joins the popular **Best Bitter** and **Special**

**Ale**. They are to be found regularly at Sussex, Hampshire and Surrey beer festivals receiving rave reviews. The latter two beers are also available bottled and can be found in pubs and off licenses.

*Glenn Johnson*

## LITTLEHAMPTON

Littlehampton, 01903 715111.

Anchor Springs Brewery has been renamed Littlehampton Brewery and the plant reinstalled at the brand new Tap & Barrel brewpub, Duke Street, where customers can watch the brews being made while they sample the ales on offer. There is an onsite shop where bottles can be bought and take-away containers used to purchase ales from the cask to take home and enjoy.

*BLOTBC*

## LONG MAN

Litlington, 01323 871850 / 07976 777992.

[www.longmanbrewery.com](http://www.longmanbrewery.com)

The brewery is ever expanding, seeing its busiest summer to date. In September, **Best Bitter** won a Gold Medal at the national level in the World Beer Awards and **Long Blonde** took a Silver Medal in the Ales Category at the International Beer Challenge. The latest Limited Craft Edition beer is **Number Eight**, a 4.4% rugby-themed pale ale. **Old Man** will also be available again this year from October, while new and available for the winter is **Inn Keeper**, 4.8% fruity winter-warmer.  
*Scott O'Rourke*

## NAKED

Lancing, 01903 791230.

[www.nakedbeerco.co.uk](http://www.nakedbeerco.co.uk)

A new fermenter is coming to help deal with the increased demand from Bristol, London and Sussex. A new cask beer, 3.5% session pale, no name as yet, is to be brewed at irregular intervals using different hops every time. Available in October,



November and possibly December will be a take on an old Sussex classic, a bonfire beer, malt led and subtly smoky, deep red in colour, at 6.66%. Again, no name as yet. A keg beer, **Sea Legs**, 4.4% IPA with Brambling Cross, Chinook and Summit hops, has been made exclusively for the Schooner, Southwick.

**Phil Boiling**

## OLD TREE

Brighton, 07413 064346.  
www.oldtreebrewery.com  
Old Tree have secured bigger premises at Preston Barracks, Lewes Road for at least two years. This will provide the perfect location for their objectives, such as bottle return and crowd-sourced foraged ingredients etc. They are looking for more fermenting capacity; so if any brewers have spare 100 to 500-litre fermenters for sale or exchange, please contact the brewery by email: oldtreecoop@gmail.com.

**Andrew Coleman**

## PELLS BREWING CO-OP

The Elephant and Castle, Lewes, 01273 473797.  
www.pellsbrewingcoop.org  
The Co-Op consists of four people (a doctor, an engineer, a publican and an NHS worker) whose love of beer and a happy accident of fate brought them together at the right time. A list of beers brewed so far appears on the website. New beers planned for Christmas - with a different member taking charge of their own brew - so far consist of **Kryspi's Christmas Dinner Ale** (6.6%), **Chuggington's Black Mass** (5.6%, festive stout) and Huw's brew, details to be confirmed. There are plans afoot to purchase more/bigger equipment to increase production in the New Year.

**BLOTBC**

## PIN UP

Southwick, 01273 411127.  
www.pinupbrewingco.com

The new **Mosaic** (3.8%) has proven to be extremely popular. The mezzanine and the boil pot fabrication are under way and should be in by Christmas.

**Adrian Towler**

## RECTORY

Streath, 01273 890570.  
Godfrey has not yet resumed brewing.  
**Jack Wilkinson**

## ROTHER VALLEY

Northiam, 01797 252922 / 07798 877551.  
www.rothervalleybrewery.co.uk  
**Ignite**, 4.6% dark ale, returns during November. A bottled version of **Golden Valley**, 4.2% wheat beer, will be available for December.  
**Dawn Lincoln**

## THREE LEGS

Brede, 07783 973161  
www.thethreelegs.co.uk  
info@thethreelegs.co.uk  
The new, much enlarged plant now in use has increased capacity to 640 litres or 4 barrels. The previous kit is retained for pilot or experimental brews. Staple beers, available in cask and bottle, are **Pale**, 3.7%, **Amber**, 4.7% and **IPA**, 4.7%. Currently available only in bottle are **Dark**, 4.5% and **Wheat**, 4.7%. The brewery is actively looking for more pubs to take its beers. Bottles are making an appearance in the area and as far away as Brighton. The brewery now has its own onsite shop, complete with a large shop-front bar, open weekdays 10am-5pm, Saturday 9am-1pm. Buy bottles, or containers of cask beers.

**Peter Harrison**

## TOP NOTCH

Haywards Heath, 07963 829368.  
www.topnotchbrewing.co.uk  
Coming this autumn is a new bottled 5.9% dark IPA, **#Bonzer**, with Galaxy and Montueka hops; it was

well received in cask at the Horsham Beer Festival. **Royal Fanfare** is on the autumn/winter list again as are **Flare-Path** and **Hop Festival**.  
**Keith Newell**

## TURNERS

Ringmer, 08456 892689 / 07896 598172.  
www.turnersbrewery.com  
The brewery reports positive feedback for the re-launched ales. Rebranding has now extended to the pump clips: the cog wheel design has been replaced to allow a focus on the beer type rather than the brewery.  
**Jason Phillips**

## UNBARRED

Hove, 07850 070471.  
www.unbarredbrewery.com  
After the successful launch at the Watchmaker's Arms of **The Long Black**, the next brew will be more of the **Coffee Porter** and bottling some. The coffee is freshly ground from The Small Batch Coffee Shop.  
**BLOTBC**

## WELTONS

Horsham, 01403 242901.  
www.weltonsbeer.co.uk  
A range of beers was available for the Rugby World Cup and a **Dreadnought Stout** at 6.2% brewed with sour hops. **Real Old** blended with new Old in oak casks at 5.4% will also be available to try, as will 5.0% **Blackcurrant Black**. Making an appearance for Halloween are **Dark Side Black IPA**, **Ghostbuster** and **Headless Horseman**. The advent festival will be held at the brewery on Friday 27 November. There will be the usual twelve beers of Christmas, with a 10% **Imperial Festive** available in bottles. There will soon be a bar in the brewery, which will be open on one evening every month.  
**Nigel Bullen**



# CIDER HOUSE NOTES

## Be-Cider Sea

Cider appears to be the up-and-coming tippie in Shoreham-by-Sea. The Buckingham Arms and the Duke of Wellington have long served a real cider, but now we have the Piston Broke (formerly the Lazy Toad), and the micro pub, the Old Star Ale and Cider House, serving not only real cider and perry, but local Sussex ones at that!



Tom Eaves now runs the Piston Broke, so named because he is one of many petrol-heads in the locality. Behind the bar is a new engine block from a McLaren P1, now put to use as a wine-bottle holder,

while a broke(n) piston sits in the front window, and various other petrol-head paraphernalia is scattered about the pub. Of course, for me the most important thing about the Piston Broke is that there is always at least one local cider on sale - JB Cider from Maplehurst, which we deliver to the pub, and Seacider from Ditchling on at the moment, too.



The Old Star Ale and Cider House was opened in August 2014 by Hugh Robinson and his friend Marc Kent, but has now been sold to Richard Hasler who was very



pleased to at last obtain a foothold in Shoreham. Under Hugh's ownership, there was always a selection of ciders and perries, served from bag-in-boxes from his cool cabinet, mainly local

ones (JB again, and Wobblegate). Richard has gone a step further by buying in supplies through Sean McFetrich, so that last time I visited there was a selection of about twelve different bag-in-boxes available atop of the bar counter! All those I tried were in good condition and at about the right temperature: I must confess that I'm not a fan of cold cider and perry; it tends to kill the flavour even though it might be more refreshing.

*Piston Broke (since October 2013), 88 High Street, Shoreham-by-Sea, BN43 5DB, tel. 01273 440036.*

*Old Star Ale and Cider House (opened August 2014; changed owners June 2015), Church Street, Shoreham-by-Sea, BN43 5DQ, tel. 07982 842057; opening hours, Tuesday to Sunday 12noon-8.30pm, closed Monday (except Bank Holidays).*

## In-Cider News

John Batchelor of JB Cider, Maplehurst, has a brand-new Cider Barn in a slightly different location, and it is looking very smart (though with the cidermaking season upon us, it will shortly be looking very business-like with the apple juices flowing). It will be the location for the next Wassail in Maplehurst on Saturday 2 January 2016, which starts at 7.30pm from the White Horse, Maplehurst.

Wassail!

## Jackie Johnson

*Cider & Perry Rep, Brighton & South Downs Branch*



# WILKES HEAD

Church Lane, Eastergate, West Sussex, PO20 3UT

Tel: 01243 543380

[www.wilkesheadeastergate.co.uk](http://www.wilkesheadeastergate.co.uk)

• *Historic 17th century Inn* •

20 minute walk (1.3 miles) from Barnham mainline station

Six Ales always on tap • In the *Good Beer Guide*

Cask Marque Approved • Secluded beer garden

Open Every Day All Day. Food 12-2.30, 6.30-8.30.



## Sussex CAMRA Pub of the Year 2014

The Roebuck Inn  
at Laughton



*The impossible pub...*

Lewes Rd, Laughton, BN8 6BG

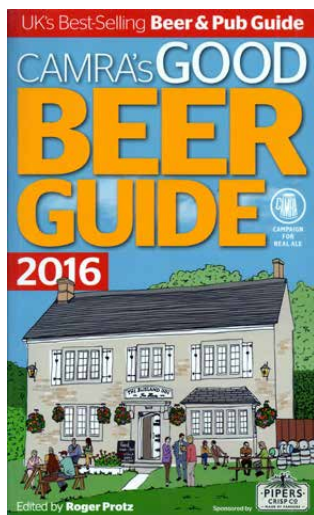
phone: 01293 811 244

[facebook.com/TheRoebuckInnLaughton](https://www.facebook.com/TheRoebuckInnLaughton)

**IRVING & CO BREWERS LTD**  
Invincible Ales from Portsmouth

Unit G1 Railway Triangle, Walton Rd,  
Portsmouth, Hampshire PO6 1TQ Tel: 02392 389988  
[www.irvingbrewers.co.uk](http://www.irvingbrewers.co.uk)  
email: [irvingbrewers@btconnect.com](mailto:irvingbrewers@btconnect.com)





The CAMRA *Good Beer Guide (GBG)* 2016, published this September, is the biggest ever, with 1016 pages listing some 4500 outlets and including a comprehensive section on all British breweries and their core beers. There are 126

Sussex pubs in the guide and below we welcome a few of our new entrants.

#### ■ AMBERLEY

On the riverside, just to the west of the railway station is the Grade-II listed **Bridge Inn**. It serves Harveys Best and Skinner's Betty Stogs plus a changing beer, and is in the Guide for the very first time.

#### ■ BRIGHTON



Jim Paine at the **Brighton Beer Dispensary** is pictured marking the pub's inclusion in the *GBG*. In its original incarnation as the Prince Arthur, it last made the Guide in 2001 but this is now a completely different operation, not just a change of name. A joint venue between Brighton Bier Co. and London brewery Late Knights, it serves up to ten real ales, including several on gravity, and up to four ciders.

It is the very first time in the Guide for the

## Welcome to the Good Beer Guide



**Hanover**, a name it has had since it was taken on by the Indigo chain. It serves five changing Sussex

ales plus a local cider on hand pump. Originally called the Queens Park Tavern, it was rebuilt in 1927 by John Leopold Denman for the Kemp Town Brewery and retains a number of external features from that date.

#### ■ CHICHESTER

Opposite the cathedral, the **Dolphin & Anchor** was originally two historic hotels that were combined in 1910, and which appeared in the Guide forty years ago when owned by Trust Houses Forte. Its present form as a J D Wetherspoon outlet is the result of a more recent conversion. It champions local micros and hosts Meet the Brewer evenings.

#### ■ HAILSHAM



Mark and Anita at the **King's Head** are delighted to be included in the *GBG*. This friendly, traditional

Harveys tenancy serves food every day except Monday and, most importantly for us, Mark keeps the beers in the cellar in perfect condition. During the winter months Harveys Best, Old Ale and seasonal beers are served on hand pump while log fires keep the pub cosy.

#### ■ HASTINGS

Andrew Swan and Tess Eaton at the **Crown** are





very pleased to be in the *GBG*, a first time ever for this Old Town pub. They are passionate

about beers and real ciders but also include craft keg from local brewers. It is a modern pub with a difference, attracting many newcomers. Menus are based around what is available locally.

## ■ HORSHAM

This year marks the first time in the Guide for the **Lynd Cross**, a town-centre, family-friendly JD Wetherspoon outlet. It hosts Meet the Brewer sessions and the house beer is usually from the local King brewery.

## ■ HOVE



This is the first time in the Guide for the **Westbourne**. This large, Victorian two-bar pub was

formerly a Kemp Town Brewery hotel called the Aldrington. The main bar serves a changing range of Sussex beers from four hand pumps and there are usually at least six real ciders available from the cider shack.

## ■ RYE



Page Brazier, manager at the **Globe Inn Marsh** is pictured with Peter Page Mitchell. The

pub is much changed since its last appearance in the Guide, way back in 1977 when it sold only Courage. It now offers four, mainly local, changing beers alongside a house beer by

Tonbridge. Good quality meals are also served and breakfasts are available from 9am.

## ■ WEST DEAN

What used to be the Selsey Arms was



refurbished and reopened two years ago as the **Dean Ale & Cider House**. This is its first time in the

Guide under its current or previous identity. A traditional roadside village pub with a stylish modern interior, it offers three changing beers (probably two in winter) alongside a house beer by Downlands.

## ■ WEST MARDEN



The team at the **Victoria Inn** are extremely proud to have made it into the *GBG* (it is a first ever for the pub) and are making good use of their additional beer pump to serve lots of lovely LocAle. They hold a number of beer festivals

and would like to thank everyone who attended their West Marden Fest in August. Not only was it their most successful beer festival to date, they also managed to raise £500 for the three nominated charitable causes.

## ■ WORTHING



**Anchored in Worthing** was the first micro pub to open in Sussex and is now the first in the county to be *GBG*-listed. On offer is a varied choice, sourced from across the county, of three ales, three ciders, bottled beers, wines and cheeses.

Your host is Nigel Watson, the local CAMRA branch contact for the *Sussex Drinker*.

Ever fancied a road trip through Florida, Georgia and the Carolinas? It takes in some wonderful history, scenery and, of course, beer by the bucketful. My wife, Lesley, has Multiple Sclerosis (MS) and, for us, travel is undertaken in relatively short steps with multiple stops. Over the years, we have looked to embrace our need for breaks by planning our outings to include as many points of interest as possible, and the Southern States of the USA provide micro pubs and breweries a plenty. Our road trip started in Fort Lauderdale and we set a course north for the first of our micro brewery visits.



Sailfish Brewing Company is located on the beach at Fort Pierce, FL 34950. On our arrival, there were just three patrons in the brewpub: a friendly couple of bikers with the customary Harleys outside, and a retired guy who was chilling with a pint. The welcome was warm and we opted for a sampling deck of all the ales on tap. They like it strong at Sailfish. The beer was clean, fresh and generally hoppy. My favourite tippie was the Sunrise City IPA, packing huge flavours at 7.0%. Lesley liked a special brew that included both jalapeno and habanero in the mix - the name escapes me but the taste will be remembered forever! Armed with a t-shirt and a souvenir pint-pot we said our goodbyes.



Up to the Florida Space Coast and we came to Cocoa Beach Brewing Company, North Atlantic Avenue, FL 32931. It was similar to Sailfish in that the brewery was housed in a wooden beach hut and the beer was once again in good order. This micro pub faces the main highway but there is a pleasant sun deck to the

## Fort Lauderdale (FL) to Wilmington (NC) with MS – Multiple Stops for Multiple Sclerosis

rear where another sampler tray was quaffed. The Key Lime Cerveza was the baby of the family, a refreshing Pilsner with a citrus note. A wholesome Oatmeal Stout and Pale Ale were very drinkable but the 888 IPA took the trophy with a mouth-watering 1080 OG, 80 IBU and 8.0% delivering the goods.



Onwards to Jacksonville and the quirky Pinglehead

Brewing Company, Orange Park, FL 32073. Marketed as “Beer with Attitude”, it is well worth exploring this haunt and not being put off by the retail park location and rather uninspiring frontage. Venture inside and you step into a 1970s time warp with a jukebox that only houses the one genre – Rock. Settling down to homemade pizza and pint of BlackhOPs (Black IPA, 7.7 %) with some classic Led Zep II for company, soon the location fades and a smile becomes fixed. Lesley went for the Pinglehead (Imperial Red Ale, 7.8%) which rendered her speechless with delight. All in all a very good lunchtime spot: one would imagine that it would be rocking by night.



Across the state line to Georgia and the wonderful city of Savannah. We made our way to Moon River Brewing Company, 21 West Bay St, GA 31401. The urban location makes this large brewpub a different animal to the Florida breweries. Altogether swankier with

a suited after-work clientele, it was very popular and offered a diverse food menu. The quality of the beer was excellent. Serving a range including a 5.0% American Golden Ale, a 4.1% Belgian-Style Wit beer and 5.3% Captain's Porter, made us more at home with the strength and the night was a long one. Save the 7.0% Swamp Fox for last as the taste will stay with you on the amble back to your digs and remind you of an evening well spent.

Continuing into South Carolina, you just have to stopover at Charleston, hear stories of the Civil War (the first shot was fired by the Confederates at Charleston) and take a horse-drawn carriage ride to find Southend Brewery



& Smokehouse. It inhabits a wonderful building on East Bay Street, Downtown Charleston, SC 29401, comprising three floors and a beautiful old glass lift that transports you from bar to restaurant and, hopefully, back to the bar! Although the beer was very drinkable, I personally found the taste a little lacking when compared to Pinglehaed and Sailfish. We sampled a tray from Pict's Stout to Riptide Red Ale and devoured the local Crab Cake. A lovely setting in a beautiful city.

Finally into North Carolina and to Wilmington, a busy riverside city but with a lovely bohemian



feel. It is compact with the river passing alongside the jetty where the historic tar and cotton trade created

its wealth. They are very proud of their Southern roots and the hospitality shown to us was wonderful. Here you can find Front Street Brewery, NC 28401, a gem of a bar with a fantastic food menu featuring grilled oysters – a Wilmington speciality. Free brewery trips are

available on a first-come first-served basis by simply registering your interest at the bar on ordering the first of your beers. The obligatory tasting after the brewery trip whets your appetite for a longer stay in a pub that gets my vote for the best on the road trip. Lesley settled on the Riptide Raspberry Wheat Beer (4.7%) that was bursting with fruity flavour. Rather unsurprisingly I found my match with the Port City IPA (6.1%), affirming my desire for an aggressive hop aroma and taste. They have a motto at the brewery – “Life’s too short to drink bad beer!” Let’s drink to that.

I have another trip planned that will no doubt incorporate multiple stops for multiple sclerosis, but unfortunately no beer! I am running the Brighton Half Marathon in February 2016 to raise money for the Sussex



MS Therapy Centre (pictured - me and Lesley are either side of the sitting gentleman), where Lesley has received Hyperbaric Oxygen Treatment (HBOT) and oodles of support for the last sixteen years. Please help me by donating whatever you can on my fundraising page:

[www.uk.virginmoneygiving.com/NigelPatching](http://www.uk.virginmoneygiving.com/NigelPatching)

Many thanks to you all.

**Nigel Patching**  
*Seafood*



# BEER FESTIVALS AND OTHER DELICENTS

**CAMRA EVENTS IN BOLD.** For FREE inclusion in this column, contact the Editor; for PAID advertisements contact Neil Richards. Copy-by date and contact details on p. 3.

**Nov 14-15** Rowfant House Winter Beer Festival, in conjunction with Kissingate Brewery; 12 noon-8pm; free entry, live music, food available including homemade pies; Wallage Lane, Crawley, RH10 4NG, 01342 714869, [www.rowfanthouse.co.uk](http://www.rowfanthouse.co.uk)

**Nov 20** Train to London Pubs, TTLP26. East London crawl from Clapton down through Hackney to Bethnal Green and Stepney. To be included on mailout list contact Pete Brown, 01243 552908, [peteb@custardtowers.plus.com](mailto:peteb@custardtowers.plus.com)

**Nov 20-22** Prestonville Arms Autumn Beer Festival, 12noon-midnight every day, 15 real ales plus cider, 64 Hamilton Road, Brighton, BN1 5DN, 01273 701007, [www.theprestonvillearms.co.uk](http://www.theprestonvillearms.co.uk)

**Nov 21-22** Clockhouse Bar & Deli 2nd annual Autumn Beer Festival to coincide with the Village Christmas lights-on event; featuring a selection of ales & ciders from micro breweries along the south coast; Saturday 12noon-11pm, Sunday 12noon until the beer runs out. Food available. Free entrance. Free first festival drink for all card-carrying CAMRA members; 103/105 Sea Road, East Preston, BN16 1NX, 01903 788367, [www.theclockhousebaranddeli.co.uk](http://www.theclockhousebaranddeli.co.uk)

**Nov 26-29** Egremont Inaugural Beer Festival, featuring 18 beers, 32 Brighton Road, Worthing, BN11 3ED, 01903 600064, [www.facebook.com/theegremont](http://www.facebook.com/theegremont)

**Nov 27** Advent Festival at Weltons Brewery, 1 Mulberry Trading Estate, Foundary Lane, Horsham, RH13 5PX, 01403 242901/251873, [www.weltonsbeer.co.uk](http://www.weltonsbeer.co.uk)

**Nov 28-29** Jolly Tanners 9th Anniversary Beer Festival, up to 30 beers and ciders; music and food over the weekend, bus service now runs on Sundays; Handcross Road, Staplefield, RH17 6EF, 01444 400335, [www.jollytanners.com](http://www.jollytanners.com)

**Dec 6** Ballard's Brewery Annual Beer Walk in aid of local charities. Western Sussex CAMRA bus will run as usual to and from the brewery. Tickets for bus available from Pete Brown, 01243 552908, [peteb@custardtowers.plus.com](mailto:peteb@custardtowers.plus.com). For details see [www.westernsussexcamra.org.uk](http://www.westernsussexcamra.org.uk)

**Dec 11-13** Festival of Christmas Ales at the Victoria Inn; around 12 Christmas ales by mainly local breweries; join in with National Christmas Jumper Day on Friday; live music on Saturday; the Prize Old Mummers perform their annual Christmas play on Sunday afternoon followed by a seasonal pub quiz (prizes will involve Christmas ales!), West Marden, PO18 9EN, 02392 631330, [www.victoriainnwestmarden.co.uk](http://www.victoriainnwestmarden.co.uk)

**Jan 2** Wassail in Maplehurst; starts at 7.30pm from the White Horse, Park Lane, RH13 6LL, 01403 891208.

**Jan 16** SUSSEX CAMRA BRANCHES LIAISON MEETING, John Harvey Tavern, Bear Yard, Lewes, BN7 2AS, 01273 479880.

**Jan 23** Train to London Pubs, TTLP27. To North London, details TBA. To be included on mailout list contact Pete Brown, 01243 552908, [peteb@custardtowers.plus.com](mailto:peteb@custardtowers.plus.com)

**Jan 29-31** Selden Arms 15th Winterfest, 41

Lyndhurst Road, Worthing, BN11 2DB.

**Feb 5-6** Tonbridge Juddians Rugby Football Club Beer Festival, The Slade, Tonbridge, Kent, TN9 1HR, 01732 358548, [www.tjrfc.co.uk](http://www.tjrfc.co.uk)

**Feb 25-27** Petersfield Beer & Cider Festival, Festival Hall, Heath Road, Petersfield, Hants, GU31 4EA, 01730 264182, [www.petersfieldfest.com](http://www.petersfieldfest.com)

**Mar 5-6** 3rd CAMRA SPRING EQUINOX FESTIVAL, Drill Hall, Denne Road, Horsham, RH12 1JF, [www.northsussexcamra.org.uk](http://www.northsussexcamra.org.uk)

**Mar 17-19** 26th SUSSEX CAMRA BRANCHES BEER & CIDER FESTIVAL, Brighton Corn Exchange, Church Street, Brighton, BN1 1UE, [www.sussexbeerfestival.co.uk](http://www.sussexbeerfestival.co.uk)



17th century coaching inn  
in a historic market town

En-suite bed and breakfast  
accommodation

Selection of real ales  
including beers from local  
breweries

Good home made food from  
locally sourced suppliers

Themed food nights

Live Music, jamming  
sessions, check [www](http://www)  
for details

## The Bull Inn

27 High Street  
Battle

East Sussex  
TN33 0EA

01424 775171

[info@thebullinnbattle.co.uk](mailto:info@thebullinnbattle.co.uk) [www.thebullinnbattle.co.uk](http://www.thebullinnbattle.co.uk)

Open:  
Mon-Thu 11-11.30pm  
Fri & Sat 11-12.30am  
Sun 11-10.30pm



Matthew & Danielle Perry invite you to  
sample the finest Sussex Ales brewed by  
Harveys of Lewes, in an authentic country  
pub atmosphere, in the centre of  
Barcombe Village.

A very warm and friendly welcome awaits  
you at this 16th century pub, serving real  
ales, fine wines, and a scrumptious  
selection of traditional English and  
International dishes in the pub and  
restaurant.

All our ingredients are locally sourced  
where possible and our food is freshly  
prepared and cooked to your  
requirements. Our main food menu is  
seasonal and changes monthly.

We are Cask Marque Accredited and in  
the CAMRA Good Beer Guide for 2013 &  
2014 - and we are also on the CAMRA Ale  
Trail.

**The Royal Oak**  
High Street  
Barcombe  
BN8 5BA

01273 400418

[info@royaloakbarcombe.co.uk](mailto:info@royaloakbarcombe.co.uk)  
[www.royaloakbarcombe.co.uk](http://www.royaloakbarcombe.co.uk)

Open Mon-Sat 10-11  
Sun 12-11

**Warm & Friendly**

## The Countryman



**Countryman Lane**  
Shipley  
West Sussex  
RH13 8PZ

**01403 741383**

[facebook.com/countrymanshipley](https://facebook.com/countrymanshipley)



CAMRA has launched a survey to elicit information from pub-goers on the extent of disproportionate charging for half-pints. This follows a motion passed in April at the Nottingham Members' Weekend and AGM. While the disproportional pricing of a half pint is not illegal, the motion called for the National

## Cost of Half Pints Campaign

Executive to mount a national campaign against this practice, which “militates against both sampling and sensible drinking.” A half pint survey form has been sent to all branches and it can be found on the members’ website: [www.members.camra.org.uk/group/guest/branch-memos](http://www.members.camra.org.uk/group/guest/branch-memos) (titled 2015-07-20 Cost of Half Pints). CAMRA campaigns assistant Ellen Hudspith said: “To help us embark upon an effective campaign, we need plenty of evidence that this is really a widespread problem. We’re talking here about significant discrepancies – not just marking up by a few pence.” So if you know of a pub that charges significantly more than half the price of a pint for a half pint, fill out the form and send to Ellen at CAMRA HQ or email her at [ellen.hudspith@camra.org.uk](mailto:ellen.hudspith@camra.org.uk).



*Very pale and malty with a surprising bitter back taste*



Mill Lane, East Hoathly, East Sussex. BN8 6DP.  
01825 840830 ~ [www.1648Brewing.co.uk](http://www.1648Brewing.co.uk)



# THE SNOWDROP INN

119 South St, Lewes BN7 2BU 01273 471018

[www.thesnowdropinn.com](http://www.thesnowdropinn.com)



**Fine Ales & Beers**  
**Delicious Home-cooked Food**



# The Stonemasons Inn

A warm welcome awaits you at the newly refurbished 17th Century Stonemasons Inn

Homemade food using local, seasonal ingredients

Real Ales

(Cask Marque Award & featured in CAMRA Best Beer Guide 2015)

Good range of wines

Sunny Garden

Comfortable en-suite accommodation



Opening hours: Mon-Sat 11am-11pm, Sun noon-10.30pm

North Street, Petworth GU28 9NL • 01798 342510

[info@thestonemasonsinn.co.uk](mailto:info@thestonemasonsinn.co.uk) [www.thestonemasonsinn.co.uk](http://www.thestonemasonsinn.co.uk)



# THE RED LION



*Locally Sourced Produce • Sussex Game • Seasonal Specials*

*Real Ales - Cask Marque Accreditation*

*Featured in The Good Beer Guide 2014 (CAMRA)*

*Real Handpulled Cider • Excellent Range of Wines*

*Largest Selection of Single Malts in the Area*

*Premium Spirits • Boutique Gins • Pimms in the Garden*

*Live Music • Featured DJ's & Open Mic*



Mon - Wed 11am to 11pm | Thurs - Fri 11am - Midnight | Saturdays 10am - Midnight (breakfast on Saturday mornings) | Sundays Noon to 11p.m  
The Red Lion • 45 High Street • Arundel • West Sussex • BN18 9AG | 01903 882214 | [admin@redlionarundel.com](mailto:admin@redlionarundel.com) | [www.redlionarundel.com](http://www.redlionarundel.com)

# SPOTLIGHT ON

# BREWERIES

## Two new breweries

**P** The vision of the Old Prentonian Brewing Company is to brew high quality, traditional and unconventional ales to supply the ever-popular micro pubs and free houses of Sussex - and hopefully beyond! Beer master and MD, Alan Mearns, brings a wealth of brewing skills from his time in the pharmaceutical industry. Initially starting off with three ales, WMD, 9.0%, Smokey Joe, 4.5%, and 'Ello Treacle, 4.0%, the intention is to grow the product range, most immediately to include an authentically brewed Pilsner lager (5.0%) and a session bitter (3.5-3.8%). Once the company has settled into commercial premises within the grounds of the Castle Tavern, Worthing, it will be able to fully utilize its state of the art 1.5-bbl plant. Contact: [www.opbrewing.co.uk](http://www.opbrewing.co.uk), 07708 690237.

Riverside Brewery will soon be operating from Unit 6, Beeding Court Farm, Shoreham Road, Upper Beeding, West Sussex, BN44 3TN, using the plant purchased from the now closed Baseline Brewery. Email: [keith@riversidebreweryltd.co.uk](mailto:keith@riversidebreweryltd.co.uk).

## Catching up on our award-winning breweries



Just a week after our autumn issue went to press, three of our Sussex breweries were successful in the Champion Beer of Britain Competition finals on the Tuesday of the

Great British Beer Festival, Olympia. Dark Star topped the Strong Bitter category with their 5.7% Revelation, after which the Dark Star Brewery "Headmaster" Paul could not help but joke that it was important to get the Gold Medal in order to do better than their neighbour, Kissingate Brewery, who won well-deserved Silver in the Speciality category with Black Cherry Mild. Kissingate's success came as a big but welcome surprise for their brewery team. Thirty loyal supporters of the brewery travelled up for the big day, and the celebrations went on late into the night! Indeed, it was a great day all round for Sussex breweries at the GBBF as Harveys Imperial Extra Double Stout was named the Champion Bottle Conditioned Beer of Britain.

The following month, September, saw the finals of the prestigious International Beer Challenge. Dark Star won a Bronze Medal in the Speciality





category for their Espresso Stout, while Harveys won no less than four Bronze Medals with Imperial Extra Double Stout and 1859 Porter (Stouts & Porters category), Tom

Paine and Copper Ale (Ales category). Harveys also took three Silver Medals: Prince of Denmark (Stouts & Porters category), Christmas Ale and Old Ale (Ales category). Long Man Brewery completes our list of Sussex Silver Medal winners, with their Long Blonde in the Ales category. Our only Gold Medal winner, however, was Brighton Bier Co., again in the Ale category, for their signature pale ale, Brighton Bier. You can read the full story about Brighton Bier's win in the article following this Spotlight section.

Also in September, at the renowned World Beer Awards, Harveys Old was named the World's



Best Mild Ale, and Lewes Castle Brown Ale the World's Best Brown Ale. As if by way of a bonus for Harveys, Imperial Extra Double Stout was named

Europe's Best Imperial Stout, while both Prince of Denmark and Elizabethan Ale won Gold Medals in their respective categories at the national (Great Britain) level. Also achieving medals at the WBA at the national level were Long Man, who won Gold in the Bitter up to 4.0% category with their Best Bitter; and Dark Star who took a Silver Medal in the Stout and Porter category with Espresso Stout. Over a thousand beers from more than thirty countries were entered, with fifty international brewers, industry experts and journalists tasting and voting over four rounds of judging; so Sussex beer can truly be said to hold its own once again on a national and international stage.



## Upholstery Services

- ❑ Made-to-measure and recovering existing, in many styles for Pubs, Clubs, Restaurants etc.
- ❑ Weather proof upholstery for outside seating areas
- ❑ Many years experience by master craftsmen in the contract business

**Contact Peter Hussey**  
**01306 631884**  
**Mob: 07779 245810**







Brighton-based brewery Brighton Bier ([www.brightonbier.com](http://www.brightonbier.com)) has won a Gold Medal in the Ales category at this year's prestigious International Beer Challenge ([www.internationalbeerchallenge.com](http://www.internationalbeerchallenge.com)) for their 4.0% signature pale ale, known simply as Brighton Bier. This "all-rounder pale, for any day and everybody", available in bottle and keg, has also been registered with The Vegan Society as suitable for vegans and vegetarians.

Brighton Bier was blind tasted along with over 630 beers from 30 countries, including Japan, South Africa and Brazil. Just 48 gold medals were awarded from the 630 beers; Brighton Bier was one of only 20 "Ales" to win gold. The beers were judged by UK beer experts including retailers, importers, publicans, brewers, writers and flavour analysts, as well as highly experienced judges from continental Europe to give a comprehensive spread of tasting experience. The only other UK breweries to win a gold medal in any category were BrewDog and Beavertown.

Chair of the judges Jeff Evans said: "This has been a bumper year for the IBC. Not only has the number of beers entered rocketed, so has the standard of the entries. Our judges have awarded more gold medals than ever, which is testimony to the quality of beers that are now available around the world: there has never been a better time to be a beer drinker. All our

## Brighton Bier Wins International Gold

medal winners deserve recognition and success but those that have won gold medals show just what the art of the brewer is all about."

Brighton Bier brewery began life in 2012 as a gypsy brewery at the Hand in Hand brewpub in Kemptown. But from the outset, the ambition was to play a lead role in the revival of the city's once proud and independent commercial brewing heritage, and put Brighton firmly back on the brewing map. It has been an exciting journey from these humble beginnings to a new brewery with 7,500-litre per week production capacity. A central location in Brighton has always been of paramount importance to Brighton Bier, enabling them to stay close to their brewing roots and maintain the integrity of their brand as a brewery based in Brighton, producing great beer for the people of Brighton.

The expansion and move into the new premises at the start of 2015 has enabled Brighton Bier to supply more venues locally and to start developing the brand around the country and overseas. As well as an increasing number of venues across Brighton & Hove, Brighton Bier is permanently available at the award winning Brighton Beer Dispensary on Dean Street, BN1. For more information about the beer or the brewery, and to order, please contact Stephen Whitehurst on 07515 956976, [stephen@brightonbier.com](mailto:stephen@brightonbier.com).



\*\*\*\*\* farm pressed \*\*\*\*\*  
**WOBBLEGATE**  
**JUICE**  
**& CIDER**  
 \*\*\*\*\*  
**PURE FRUITINESS**  
 \*\*\*\*\* from Sussex \*\*\*\*\*

Sussex  
Food & Drink  
Awards  
2011/12

Winner

**YOUR LOCAL AWARD  
WINNING JUICE &  
CIDER PRODUCER**

Supplying our fruity drinks  
across the South East,  
London and beyond...



**Juicy HQ**

Old Mill Fruit Farm, Bolney,  
West Sussex, RH17 5SE

**Become a stockist and enjoy the adventure with us**

Call: 01444881356 🍏 info@wobblegate.co.uk 🍏 wobblegate.co.uk



***Craft Produced Ales  
from East Sussex***

☎ 0790 0218584 / 01424 731066

**f** Franklin's Brewery

🐦 @FranksBrewSussx 📷 franksbrew





*Horsham Drill Hall,  
5-6 March 2016*

Following the popular and successful event last March, once again we would love to see you at the 3rd CAMRA North Sussex Equinox Beer & Cider Festival. The venue is the Drill Hall, Denne Road,

Horsham, RH12 1JF, which is in the town centre about a 15 to 20 minute walk from the railway station, maybe less from the bus station. There will be over forty beers, with a balanced mix of winter and spring ales. All of our excellent branch brewers will feature, alongside other local favourites and some gems from further afield. Those who like cider and perry are not forgotten, with a selection of both available.

The date is slightly earlier than in 2015, partly due to Easter being the last weekend in March, but also due to hall availability. This will hopefully avoid clashing with any other events taking place in the area, CAMRA or otherwise! Along with the earlier date, the other main change for 2016 is that admission to the Sunday drink-up session from 12noon-4pm will be FREE. Tickets for the two Saturday sessions 12noon-4pm and 6-10pm are £6 each, which will include a souvenir glass, plus a free pint for card-carrying CAMRA members. Hot and cold baguettes and snacks will be available at all sessions.

The acoustic music scene in Horsham is particularly strong and has been a real feature of both the previous events. We will again be providing an excellent line up for the Saturday evening and Sunday afternoon sessions. The

## 3rd CAMRA Spring Equinox Festival

branch will make a £1 donation to a local charity for any returned souvenir glasses, along with the value of any donated surplus tokens.

Saturday tickets go on sale at the start of December from Beer Essentials, the Malt Shovel and Kings Brewhouse, all in Horsham. Postal applications (cheques payable to CAMRA North Sussex) to The Treasurer, 19 Felbridge Avenue, Crawley, West Sussex, RH10 7BD. For more info, including a beer list in due course, contact [camra.equinox@gmail.com](mailto:camra.equinox@gmail.com), or [www.northsussexcamra.org.uk](http://www.northsussexcamra.org.uk), or twitter [@camraequinox](https://twitter.com/camraequinox).

**Mike Head**

*North Sussex Branch*



**King's Head**

**Rudgwick RH12 3EB**

**Traditional Village Pub  
Cask Ales & Ciders**

***"The Pie & Pudding Pub"***

Food served every Lunchtime and Wednesday to Saturday evenings

**A great base for walkers and cyclists using the Pub  
Large car park**



Kings Head, Church Street, Rudgwick RH12 3EB  
01403 822200 [kingsheadrudgwick.co.uk](http://kingsheadrudgwick.co.uk)



Traditional cask conditioned locally brewed ale



LANGHAM



BREWERY

www.langhambrewery.co.uk



WHAT DO **YOU** WANT FOR CHRISTMAS???



**Visit us for all your Christmas ale requirements!!!**

*From piggins to firkins, or a pint to put in your Christmas pudding  
& festive beer boxes with 3 of your favourite ales in bottles.*

*Brewery open Christmas Eve and New Year's eve.*

01798 860 861 • 07789112559 • 07795233480



**The Old Granary, Langham Lane, Lodsworth, West Sussex GU27 9BU**



## The Kings Head

40 High Street  
Billingshurst  
RH14 9NY



01403-782012

17th Century  
Old Coaching Inn

Eight Real Ales  
and Real Cider

Large selection  
of Belgian Beers

Beer Garden

Future refurbishment  
in pipeline to add  
Sixteen Bed Hotel,  
Restaurant and Tea Room

Colin & Oonagh offer  
a warm welcome to all  
Old & New Customers

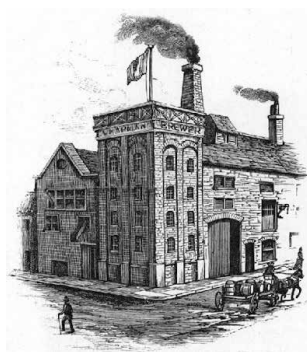


Our Winter 2014 issue carried a Pub Scratchings report from Worthing that the then closed Egremont was being sensitively refurbished by a new owner who intended to keep it as a real ale pub and with the interwar Kemp Town Brewery livery and windows intact. That new owner turned out to be locally-born Greg Grundy, who reopened the beautifully restored Egremont towards the end of May 2015. The Egremont name is most likely in honour of the Earl of Egremont; the family coat of arms, featuring three lion heads and a chevron, can be found on the outside of the building. By the late-Victorian period, the pub had become a hotel.

George Greenfield built both the Egremont and the originally adjoining ten-quarter tower brewery in Warwick Road, in 1835/6. First known as the Egremont Brewery, it became the Worthing Steam Brewery upon being acquired by Walter Greenfield in 1870. When Harry

# The Egremont Worthing

Chapman took over in 1880, he renamed it the Tower Brewery. Chapman sold the business in 1920 to Ernest Adams. Four years later, it was taken over by the Kemp Town Brewery of Brighton, who closed it in 1926. It subsequently housed at various times an upholsters, a printing works and a gym before being converted to apartments.



The Kemp Town Brewery was at the forefront of the movement towards the socially inclusive and respectable 'improved public house' and they accordingly

modernised the Egremont Hotel around 1929/30, resulting the façade that we see today. It is virtually certain that it was designed by their in-house architect John Leopold Denman: the arrangement of carved-oak arched Tudor doorways, herringbone brickwork and leaded stained glass windows bears a close similarity to that of another Denman remodelled KTB house of the same period, the Railway (now the Dolphin), South Street, Eastbourne.



In admirable harmony with the original Kemp Town Brewery ethos, Greg has created the new Egremont as a

community local. There are two quizzes a week, general knowledge on Thursday and music on Sunday. There will be live bands, mainly on Saturday nights and mostly in the 1950s R'n'R tradition; also a blues open mike (with jazz and folk variants). Housed in the pub is a Toad in the Hole game, which involves tossing brass counters at a box with a slot in a lead lid, a popular pursuit in the Lewes area but a rarity in West Sussex. The Egremont also offers a seven-day-a-week food menu of traditional home-cooked pub favourites, and they will be showing all the Rugby World Cup matches.

Two of the cask ales on the six hand pumps, Egremont 1836 and Double Dolphin, are brewed, badged and supplied exclusively for the pub by Goldmark. Three other regular beers are Harveys Best, Dark Star APA and Hop Back Summer Lightning. The pump for the changing guest ale has so far offered Goldmark Black Lion Porter, Burning Sky Plateau and Auora, Vibrant

Forest Flying Saucer, and a variety of Dark Star ales. A date for your diaries is November 26-29, when Greg is holding the Egremont Inaugural Beer Festival, featuring eighteen beers from Burning Sky, Wylam, Goldmark, Hastings, Titanic, Vibrant Forest, Green Jack, Dark Star, Rebellion, Box Steam, Salopian, Hop Back, Taylors, Purple Moose, Egremont Brewing Co. and Harveys.

The Egremont Public House, 32 Brighton Road, Worthing, West Sussex BN11 3ED, 01903 600064, [www.facebook.com/theegremont](http://www.facebook.com/theegremont); opening hours 12noon-11pm Monday, Tuesday and Wednesday, 12noon-11.30pm Thursday and Sunday, 12noon-12midnight Friday and Saturday.

The large picture of the bar area (below) is by kind courtesy of Trevor Leighton, [www.trevorleighton.com](http://www.trevorleighton.com).

### The Quaffer







Parish councillor and CAMRA member Penny Kift is pictured (right) with Huw Merriman, local MP and also a CAMRA member (centre), and Steve Obey, North East Sussex CAMRA Sub-Branch Officer, in the Prince of Wales, Heathfield, celebrating the pub's listing as an Asset of Community Value (ACV). Penny gained the backing of more than twenty local people to support her nomination of the pub to Wealden District Council. Although there is no present threat to the Prince of Wales, it is particularly valued as the only pub in Heathfield Town.

Nationally more than 800 pubs are now listed; CAMRA has an aim for this to reach 1,500 by the end of this year and 3,000 by the end of 2016. This article lists all Sussex pubs that have been accepted onto the ACV register up to 1 October 2015. That a few are no longer trading as pubs should make us aware that an ACV does not forever guarantee a pub's survival; it is also important to know that an ACV has an expiry date of five years. But what an ACV listing does do is to protect pubs from being demolished or converted to other uses without a proper planning process. And if a pub is put up for sale, an ACV listing allows the community six months to rally round and raise the funds to make a purchase.

More information on ACVs can be found on the

## List Your Local

CAMRA web site at  
[www.camra.org.uk/list-your-local](http://www.camra.org.uk/list-your-local).

Sussex pubs with ACV nominations accepted

Abergavenny Arms, Newhaven Road, Rodmell, BN7 3EZ

Anchor Inn, Lewes Road, Ringmer, BN8 5QE  
Black Horse, High Street, Amberley, BN18 9NL

Cross Inn, Cripps Corner Road, Staplecross, TN32 5QA

Dorset Arms, off B2110, Withyham, TN7 4BD  
Dinkum, 54 High Street, Polegate, BN26 6AG  
Drive, 153 Victoria Drive, Eastbourne, BN20 8NH

Eight Bells, Bolney Street, Bolney, RH17 5QW  
Foresters Arms, Kirdford, RH14 0ND

Fox Inn, Waterloo Road, Felpham, PO22 7EH  
George Inn, 102 Felpham Road, Felpham, PO22 7PL

Half Moon, Glass House Lane, Kirdford, RH14 0LT

Half Moon Inn, London Road, Northchapel, GU28 9HP

Highlands Inn, Eastbourne Road, Ridgewood, Uckfield, TN22 5SP

Horse and Groom, 129 Islingword Road, Brighton, BN2 9SH

Hurst Arms, 76 Willingdon Road, Eastbourne, BN21 1TJ

Inn on the Green, Lewes Road, Scaynes Hill, RH17 7NE

Jolly Tanners, Handcross Road, Staplefield, RH17 6EF

Jolly Sportsman, Chapel Lane, East Chiltington, BN7 3BA

Joyful Whippet, Steepdown Road, Sompting, BN15 0LJ

Junction, 99 Station Road, Polegate, BN26 6EB  
Keepers Arms, Trotton, GU31 5ER

Kings Beach Hotel, The Parade, Pagham, PO21

4TW  
 Lamb Inn, Church Lane, Ripe, BN8 6AS  
 Lickfold Inn, Highstead Lane, Lickfold, GU28 9EY  
 Mill Tavern, Liphook Road, Shottermill, GU27 2QE  
 Muddy Duck, Main Street, Northiam, TN31 6LP  
 Murrell Arms, Yapton Road, Barnham, PO22 0AS  
 New Inn, 5 Norfolk Road, Littlehampton, BN17 5PL  
 New Inn, German Street, Winchelsea, TN36 4EN  
 Old Barn, 42 Felpham Road, Felpham, PO22 7DF  
 Parkfield, Lindfield Road, Hampden Park, BN22 0AU  
 Plough Inn, Hastings Road, Crowhurst, TN33 9AW  
 Prince Albert, Copthorne Bank, Copthorne, RH10 3QX  
 Prince of Wales, Station Road, Heathfield, TN21 8DR  
 Red Lion, Hooe Common, Hooe, TN33 9EW  
 Red Lion, The Street, Slinfold, RH13 0RR  
 Roebuck Inn, Lewes Road, Laughton, BN8 6BG  
 Rose & Crown, High Street, Fletching, TN22 3ST  
 Rose Hill Tavern, 70-71 Rose Hill Terrace, Brighton, BN1 4JL  
 Royal Oak, Grange Road, Crawley Down, RH10 4JT  
 Royal Oak, Stocks Lane, East Wittering, PO20 8BS  
 Royal Oak, 336 Chichester Rd, North Bersted, Bognor Regis, PO21 5JF  
 Seaview Hotel, 127 Sea Road, East Preston, BN16 1PD  
 Ship Inn, Aldwick Street, Aldwick, Bognor Regis, PO21 3AP  
 Southdowns, 133 Felpham Way, Bognor Regis, PO22 8QJ

Star and Garter, East Dean, PO18 0JG  
 Thatched House, 8 Limmer Lane, Felpham, PO22 7EJ  
 Tudor Tavern, 138-140 Sea Road, East Preston, BN16 1NN  
 Victory Inn, Warninglid Road, Staplefield, RH17 6EU  
 Vine Inn, 27-29 High Street, Tarring, Worthing, BN14 7NN  
 Watermill, 1 Leylands Road, Burgess Hill, RH15 0QF  
 White Horse, Graffham, GU28 0NT  
 White Horse, 22 High St, Lindfield, RH16 2HH  
 Wilkes Head, Church Lane, Eastergate, PO20 3UT

Nomination submitted, decision pending

Dew Drop Inn, 96 Wick St, Wick, Littlehampton, BN17 7JS




[www.thesussexoak.co.uk](http://www.thesussexoak.co.uk)

We are a country pub situated deep in the heart of Sussex. Here you will find a large selection of local and national ales on 8 hand pumps.

We have an extensive food menu prepared from fresh local ingredients.

Fresh local food served all day Friday to Sunday, and lunch and dinner Monday to Thursday.

**The Sussex Oak**  
**2 Church Street**  
**Warnham**  
**Nr Horsham**  
**RH12 3QW**



**In the CAMRA 2016 Good Beer Guide and CAMRA Good Pub Food Guide**



**GOOD BEER GUIDE 2016**  
**We're in it**



**Large Garden and field.**

**Celebrating 12 years in the Good Beer Guide**

Come and celebrate Great Beer in front of a Roaring Fire

01403 265028
 [The-Sussex-Oak-at-Wareham](https://www.facebook.com/The-Sussex-Oak-at-Wareham)

CAMRA South East Sussex Branch has established a Sub Branch covering North East Sussex, including Crowborough, Etchingham, Heathfield, Mayfield, Wadhurst and surrounding areas. John Packer has been elected Chair and is the point of contact. His details are on p. 3. CAMRA members from the

## North East Sussex Sub Branch

area are most welcome at any of its gatherings, details of which can be found at [www.southeastsussex.camra.org.uk](http://www.southeastsussex.camra.org.uk) on the

branch diary page or on Twitter @NESussCAMRA.

The Sub Branch recently made its first visit to a brewery, the Gun Brewery at Gun Hill, south of Heathfield. John Packer is pictured there with other members; he is to the right of centre wearing a blue baseball cap and chequered shirt.



**A Campaign**

Fair deal on beer  
Save Britain's Pubs!

**of Two Halves**

**Join CAMRA Today**  
Complete the Direct Debit form and you will receive 15 months membership for the price of 12 and a fantastic discount on your membership subscription. Alternatively you can send a cheque payable to CAMRA Ltd with your completed form, visit [www.camra.org.uk/joinus](http://www.camra.org.uk/joinus) or call 01727 867201. All forms should be addressed to: Membership Department, CAMRA, 230 Hatfield Road, St Albans, AL1 4LW.

**Your Details**

Title \_\_\_\_\_ Surname \_\_\_\_\_  
Forename(s) \_\_\_\_\_  
Date of Birth (dd/mm/yyyy) \_\_\_\_\_  
Address \_\_\_\_\_  
Postcode \_\_\_\_\_  
Email address \_\_\_\_\_  
Tel No(s) \_\_\_\_\_

**Partner's Details (If Joint Membership)**

Title \_\_\_\_\_ Surname \_\_\_\_\_  
Forename(s) \_\_\_\_\_  
Date of Birth (dd/mm/yyyy) \_\_\_\_\_  
Email address (if different from main member) \_\_\_\_\_

01/15

Direct Debit Non DD

Single Membership £24 ☐ £26 ☐  
(UK & EU)

Joint Membership £29.50 ☐ £31.50 ☐  
(Partner at the same address)

For Young Member and other concessionary rates please visit [www.camra.org.uk](http://www.camra.org.uk) or call 01727 867201.

I wish to join the Campaign for Real Ale, and agree to abide by the Memorandum and Articles of Association

I enclose a cheque for \_\_\_\_\_

Signed \_\_\_\_\_ Date \_\_\_\_\_

Applications will be processed within 21 days

**Instruction to your Bank or Building Society to pay by Direct Debit**

Please fill in the whole form using a ball point pen and send to:  
Campaign for Real Ale Ltd,  
230 Hatfield Road, St Albans, Herts AL1 4LW

Name and full postal address of your Bank or Building Society  
To the Manager \_\_\_\_\_ Bank or Building Society  
Address \_\_\_\_\_  
Postcode \_\_\_\_\_  
Name(s) of Account Holder \_\_\_\_\_

Bank or Building Society Account Number \_\_\_\_\_ Branch Sort Code \_\_\_\_\_

Reference \_\_\_\_\_

Service User Number 9 2 6 1 2 9

**FOR CAMPAIGN FOR REAL ALE LTD OFFICIAL USE ONLY**  
This is a part of the instruction to your Bank or Building Society

Membership Number \_\_\_\_\_  
Name \_\_\_\_\_ Postcode \_\_\_\_\_

**Instructions to your Bank or Building Society**  
Please pay Campaign For Real Ale Limited Direct Debits from the account declared on this instruction subject to the safeguards secured by the Direct Debit Guarantee. I understand that this instruction may remain valid with Campaign For Real Ale Limited and if so will be passed electronically to my Bank/Building Society.

Signature(s) \_\_\_\_\_ Date \_\_\_\_\_

Banks and Building Societies may not accept Direct Debit instructions for some types of account.  
This Guarantee should be detached and retained by the payer.

**The Direct Debit Guarantee**

• This Guarantee is offered by all banks and building societies that accept instructions to pay by Direct Debit.  
• If there are any changes to the amount, date or frequency of your Direct Debit The Campaign for Real Ale Ltd will notify you 10 working days in advance of your account being debited or as otherwise agreed. If you request The Campaign for Real Ale Ltd to correct a payment, confirmation of the amount and date will be given to you at the time of the request.  
• If an error is made in the payment of your Direct Debit by The Campaign for Real Ale Ltd or your bank or building society you are entitled to a full and immediate refund of the amount paid from your bank or building society.  
• If you receive a refund you are not entitled to, you must pay it back when The Campaign for Real Ale Ltd asks you to.  
• You can cancel a Direct Debit at any time by simply contacting your bank or building society. Written confirmation may be required. Please also notify us.

**Campaigning for Pub Goers & Beer Drinkers**

**Enjoying Real Ale & Pubs**

**Join CAMRA today - [www.camra.org.uk/joinus](http://www.camra.org.uk/joinus)**





What follows is a list of Sussex pubs that we believe offer a discount or a price cap on real ale for CAMRA members. Although the information is

given in good faith, we cannot vouch for its accuracy and it is liable to change at short notice. Offers are always subject to the jurisdiction of the pub in question and it is necessary to show a valid membership card to obtain the discount. Some discounts may be modified or restricted where special promotions are on offer. If you know of any amendments or are aware of an outlet that should be added to the list, please let us know. Contact details on p. 3.

Ancient Mariner, 59 Rutland Road, Hove, BN3 5FE, discounted to £3.20 a pint.

Bar Release, 20 Chapel Rd, Worthing, BN11 1BJ, 20%.

Brewers Arms, 91 High St, Lewes, BN7 1XN, 5%.

Brewery Shades, 85 High St, Crawley, RH10 1BA, 20p a pint. Extra 10p if you have 'Shades Card'.

Bull, Goring Street, Goring by Sea, Worthing, BN12 5AR, 10%.

Chichester Inn, 38 West Street, Chichester, PO19 1RP, price cap at £3.90.

Dew Drop, 37-39 South Street, Eastbourne, BN21 4UP, 10p a pint, not halves.

Fiveways, 292 Ditchling Road, Brighton, BN1 6JG, 10%.

George, Eartham, PO18 0LT, higher priced stronger ales discounted to the price of the lower strength ales.

New Inn, 5 Norfolk Road, Littlehampton, BN17 5PL, 10p a pint, 5p a half.

## CAMRA Discounts Scheme

Prince George, 5 Trafalgar St, Brighton, BN1 4EQ, 60p a pint.

Rodmill, Rangemore Drive, Eastbourne, BN21 2QP, 10%, including halves.

Pub du Vin, 7 Ship St, Brighton, BN1 1AD, 20%.

Queen's Head, 19 Landgate, Rye, TN31 7LH, 10%, including halves.

Quench Bar & Kitchen, 2-4 Church Road, Burgess Hill, RH15 9AE, 10%; also accepts Wetherspoon CAMRA 50p vouchers.

Victory, 6 Duke St, Brighton, BN1 1AH, discounted to £3.20 a pint.

*All JD Wetherspoon pubs accept CAMRA 50p vouchers, subject to the terms and conditions printed on the rear.*

*Ember Inns advertise 20p a pint discount: their Sussex outlets are:*

Fox and Hounds, Fox Hill, Haywards Heath, RH16 4QY

Frogshole Farm, Maidenbower Drive, Maidenbower Village, Crawley, RH10 7QF  
North Star, Littlehampton Road, Durrington, Worthing, BN13 1QY

Red Lion, 60 High Street, Haywards Heath, RH16 2HL

Sussex, 17 St Catherines Terrace, Hove, BN3 2RH

Sussex Cricketer, Eaton Road, Hove, BN3 3AF

*Taylor Walker advertise 10% off; their Sussex outlets are:*

Anchor Hotel, 3 Market Square, Horsham, RH12 1EU

Druids Head, 9 Brighton Place, Brighton, BN1 1HJ

Palmeira, 70-71 Cromwell Road, Hove, BN3 3ES

Sussex, 33-34 East Street, Brighton, BN1 1HL



Ok CAMRA members, where is Tangmere? Just two and a half miles east of Chichester. What is it famous for? Tangmere Airfield, a very successful fighter base in World War Two. The renowned Douglas Bader flew from

Tangmere and the Special Operations Executive based there flew spies to behind enemy lines. The airfield now has an Aviation Museum, which is the second largest visitor attraction in the Chichester area. The east part of the airfield is now Tangmere



Pepper Nursery where peppers are grown under seventy acres of glass houses. The hard standing is used as an HGV driver training area, while most of the farming land is owned by the Church Commissioners: wheat, barley, rape seed, peas and maize are the usual crops.

Tangmere has grown from 650 houses to over 1300 now and another 1000 are destined to be built in the next few years, so the village is crying out for a pub. It used to have one, owned by Hall & Woodhouse and called the Bader Arms, but it became a Co-op - ough! The nearest pubs to Tangmere are the Anglesey Arms, Halnaker and the Gribble, Oving. Put the population of both of those villages together and it is far less than that of Tangmere.

Why all this dribble you might ask? Well Tangmere has a Commercial Business Park and it would be an ideal position from which to

## TANGMERE NEWS or lack of it

operate a brewery. It could start small and grow bigger or start large. With another 7300 houses to be built in the Chichester area, the potential for such a project is enormous. Why am I submitting this article to the *Sussex Drinker*? I raised this subject at a recent CAMRA liaison meeting held at the now defunct Bulls Head, Chichester and was advised to publicise it in the hope that a budding entrepreneur may be interested.

Possible names for brews: Bader IPA, Special Executive Ale, Tangmere Tickler, and a knock-out beer, Tangmere Taser.

**David Blythe**  
*Western Sussex Branch*



An ever changing range of five cask conditioned ales that always includes one mild, one session bitter, two best bitters and one strong bitter.

Plus one changing craft keg beer, Hacker Pschorr genuine Munich lager, and Westons Old Rosie Cider on gravity.

Homemade traditional food, plus 5 en suite bedrooms.

All of this in a very traditional pub!

West Chiltington Silver Band will be playing Carols & Christmas songs in the Bar on Wednesday December 16th at 7.30pm.

All are Welcome.

[www.thefivebellsinn.com](http://www.thefivebellsinn.com)

**Five Bells**  
**Smock Alley**

**West Chiltington**

**West Sussex**

**RH20 2QX**

**01798 812143**





Our autumn issue noted that the Tower, St Leonards-on-Sea had been voted the overall Sussex

Branches Pub of the Year for 2015. Pictured above is Area Organiser and local resident Peter Page Mitchell in the process of presenting the certificate to Louisa Gover and her staff.



The Brighton Beer Dispensary has only been in operation since April 2014 but has already won the award of Surrey & Sussex CAMRA Cider Pub of the Year. Regional Director Chris Stringer is pictured (above left) congratulating the certificate-holding Jim Paine.



The Horns Lodge, South Chailey has been voted the Brighton & South Downs Branch

Country Pub of the Year for a record fifth year in succession. The pub holds an annual July beer festival in aid of the local St. Peter and St. James Hospice. The picture above shows Horns Lodge owners Linda Mike and Linda having

# CAMRA Awards 2015

received their award during the course of the festival.



The Western Sussex Branch took two relatively short trips in August to make awards for winning beers at the Yapton Beerex. Branch Chair Philip Wildsmith is pictured above presenting the certificate for overall Beer of the Festival to Downlands Brewery for their Devils Dyke Salted Caramel, and the certificate for LocAle of the Festival to Vibrant Forest Brewery for their Radicale Oat & Coffee Stout.

Brighton & South Downs Branch Cider Rep,



Jackie Johnson, is pictured at the Snowdrop Inn, Lewes presenting the certificate to Sea Cider for their Cider of the Festival Award at the South Downs Beer & Cider Festival.



# THE KILN BREWERY

With the Kiln nano brewery being set up early in 2014 at 4 Alexander Road, Burgess Hill, it seemed

appropriate to look back at the history of brewing in the town.



The previous venture was just over thirty years ago, from 1983-86; it was called the Burgess Brewery and located at the

Railway Inn, 8-10 Station Road, now a Greene King house.

After that we have to travel back to the Victorian period. Little is known about the Bridge Brewery, Fairplace Hill, St John's

A. B. HYDE,  
*Tobacco, Stout, Ale & Porter*  
"BRIDGE BREWERY," St. John's Common, Burgess Hill.

TERMS CASH.

Common, except that it was operating by 1877 under the ownership of Alfred

Benjamin Hyde but sold by the Hyde Brothers in 1882. The advert of the period (above) does not tell us much more.



The other Victorian venture was the St John's Brewery, London Road. It was founded by Thomas Charman, c. 1861 at the site behind the Brewers Arms, hence the name of the pub. The plant was acquired c.

# Brewing in Burgess Hill

1877 by Thomas Saunders Stroud. His advert (below) reports in some detail about the brewery's success and the beers it produced. Stroud at some point leased the brewery, first to Charles Page, then to Charles H. Pitcher, before leaving the business in 1895. The premises were used as by a beer retailer and mineral water manufacturer until 1910 when sold to Harry Chapman of Worthing for use as a depot.

T. S. STROUD,  
"St. JOHN'S BREWERY," BURGESS HILL.

T. S. STROUD begs to convey his most sincere thanks for the very liberal support accorded him since he succeeded Mr. Charman, and trusts to receive a continuance of the same. The trade having far exceeded his expectations, he has found it necessary to add Steam Power, which is now completed, and enables him to keep a larger Stock, thus giving age before Goods are sent out.

He has now completed his October Brewings, which he can strongly recommend for their keeping qualities.

PRICE LIST.

Fine Keeping Bitter Ale ...	7/6	15/-	Good Mole Ale, X .....	6/-	12/-
Ditto, ditto strongly recommended .....	9/-	18/-	Ditto XX .....	9/-	18/-
Ditto ditto .....	10/8	21/-	Porter .....	9/-	18/-
Ditto ditto .....	13/6	27/-	Stout—superior—equal to London .....	13/6	27/-

Beck's & Guinness's Bottled Ale & Stout at List Prices.

ORDERS RECEIVED BY MR. JAMES WOOD, CUCKFIELD.

If anyone has any more details about these or other past breweries in West Sussex please contact the editor, David Muggleton at [thequaaffer@yahoo.co.uk](mailto:thequaaffer@yahoo.co.uk). His book, *Brewing in West Sussex*, is to be published early in 2017 by Amberley of Stroud, Gloucestershire,

Sources:  
Barber, Norman, (Brown, Mike and Smith, Ken, Eds.) (2005), *A Century of British Brewers*, Longfield, Kent: Brewery History Society.  
Holter, Graham (2001), *Sussex Breweries*, Seaford: SB Publications.  
Holtham, Peter (2004), *The Brewers of West Sussex*, *Sussex Industrial History*, 34, pp. 2-11.



**LONG MAN BREWERY**  
FINEST SUSSEX ALES

# AMERICAN PALE ALE

4.8% ABV





## Celebrating another award-winning year at Harveys

### *Sussex Best Bitter*

Winner 'Beer of the Festival', Pendle Beer Festival 2015

### *Waterloo Rye IPA*

Winner 'Beer of the Festival', South Downs Beer & Cider Festival 2015

### *Imperial Extra Double Stout*

Champion Bottle-Conditioned Beer of Britain, Great British Beer Festival 2015  
&

UK Best Imperial Stout, World Beer Awards 2015

### *Old Ale*

'World's Best Mild Ale', World Beer Awards 2015

### *Lewes Castle Brown Ale*

'World's Best Brown Ale', World Beer Awards 2015

### *225th Anniversary Special Award 2015*

'For your never ending support for Real Ale and the help given to Brighton & South Downs CAMRA'



**Wishing All CAMRA Members**

*Very Merry Christmas  
& a Happy New year in 2016*

